

PMG PROJECT NUMBER: 22-180

SEAL:

NO.	DATE	REVISION DESCRIPTION	DR.
1	24.OCT.28	COMMENTS: NEW SITE PLAN	MM
2	24.AUG.26	NEW SITE PLAN	MM
3	24.JUN.25	AS REQUESTED SP	MM
4	23.APR.23	NEW SITE PLANTCOMMENTS	MM
5	23.OCT.23	NEW SITE PLAN	NL
6	23.OCT.23	REVISION FOR SP	NL
7	23.OCT.23	NEW SITE PLAN	KL
8	23.OCT.23	GRADING PLAN NEW SITE PLAN	NL
9	23.APR.26	GRADING PLAN NEW SITE PLAN	DR

CLIENT:



PROJECT:

**TOWNHOUSE
DEVELOPMENT**

**20247 PATTERSON AVENUE
MAPLE RIDGE, BC**

DRAWING TITLE:

**LANDSCAPE
PLAN**

DATE: 23.APR.19

SCALE: 1:200

DRAWN: JR

DESIGN: JR

CHKD: MCY

PMG PROJECT NUMBER:

DRAWING NUMBER:

L2

OF 9

22-180



TREE



FURNITURE

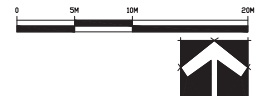


PLANT SCHEDULE

KEY	QTY	BOTANICAL NAME	COMMON NAME	PMG PROJECT NUMBER: 22-180
			PLANTED SIZE / REMARKS	
13	ACER GRISEUM	PAPERBARK MAPLE	6CM CAL: 1.8M STD: B&B	
6	ACER PALMATUM	JAPANESE MAPLE	5CM CAL: B&B	
7	ACER RUBRUM 'ARMSTRONG'	COLUMNAR ARMSTRONG MAPLE	6CM CAL: 2M STD: B&B	
16	CORNUS FLORIDA 'RUBRA'	PINK FLOWERING DOGWOOD	6CM CAL: 1.8M STD: B&B	
5	PICEA OMORICA 'BRUNS'	BRUNS SERBIAN SPRUCE	2.5M HT: B&B	

NOTES: * PLANT SIZES IN THIS LIST ARE SPECIFIED ACCORDING TO THE BC LANDSCAPE STANDARD AND CANADIAN LANDSCAPE STANDARD, LATEST EDITION. * CONTAINER SIZES SPECIFIED AS PER CANA STANDARD. BOTH PLANT SIZE AND CONTAINER SIZE ARE THE MINIMUM ACCEPTABLE SIZES. * REFER TO SPECIFICATIONS FOR DEFINED CONTAINER MEASUREMENTS AND OTHER PLANT MATERIAL REQUIREMENTS. * SEARCH AND REVIEW: MAKE PLANT MATERIAL AVAILABLE FOR OPTIONAL REVIEW BY LANDSCAPE ARCHITECT AT SOURCE OF SUPPLY. AREA OF SEARCH TO INCLUDE LOWER MARLAND AND FRASER VALLEY. * SUBSTITUTIONS OBTAIN WRITTEN APPROVAL FROM THE LANDSCAPE ARCHITECT PRIOR TO MAKING ANY SUBSTITUTIONS. TO THE SPECIFIED MATERIAL. UNAPPROVED SUBSTITUTIONS WILL BE REJECTED. ALLOW A MINIMUM OF FIVE DAYS PRIOR TO DELIVERY FOR REQUEST TO SUBSTITUTE. SUBSTITUTIONS ARE SUBJECT TO BC LANDSCAPE STANDARD AND CANADIAN LANDSCAPE STANDARD. * DEFINITION OF CONDITIONS OF AVAILABILITY. * ALL LANDSCAPE MATERIAL AND WORKMANSHIP MUST MEET OR EXCEED BC LANDSCAPE STANDARD AND CANADIAN LANDSCAPE STANDARD LATEST EDITION. * ALL PLANT MATERIAL MUST BE PROVIDED FROM CERTIFIED DISEASE FREE NURSERY. * BIO-SOLIDS NOT PERMITTED IN GROWING MEDIUM UNLESS AUTHORIZED BY LANDSCAPE ARCHITECT.

REPLACEMENT TREES REQUIRED: 40 TREES PER HECTARE
SITE IS 1.3MM ACRES = 590 HECTARES
TOTAL REPLACEMENT TREES REQUIRED - 22.3



22180-9.2P

SEAL:

NO.	DATE	REVISION DESCRIPTION	DR.
8	24 OCT 28	COMMENTS: NEW SITE PLAN	MM
7	24 AUG 26	NEW SITE PLAN	MM
6	24 JUN 25	AS ISSUED FOR SP	MM
5	23 APR 23	NEW SITE PLANT/COMMENTS	MM
04	23 OCT 23	NEW SITE PLANS	NCL
03	23 SEP 23	ISSUED FOR SP	MM
02	23 SEP 23	NEW SITE PLAN	MM
01	23 APR 26	GRADING PLAN, NEW SITE PLAN	NCL

CLIENT:



PROJECT:

**TOWNHOUSE
DEVELOPMENT**

**20247 PATTERSON AVENUE
MAPLE RIDGE, BC**

DRAWING TITLE:

**SHRUB
PLAN**

DATE: 23 APR 19 DRAWING NUMBER:

SCALE: 1:150

DRAWN: JR

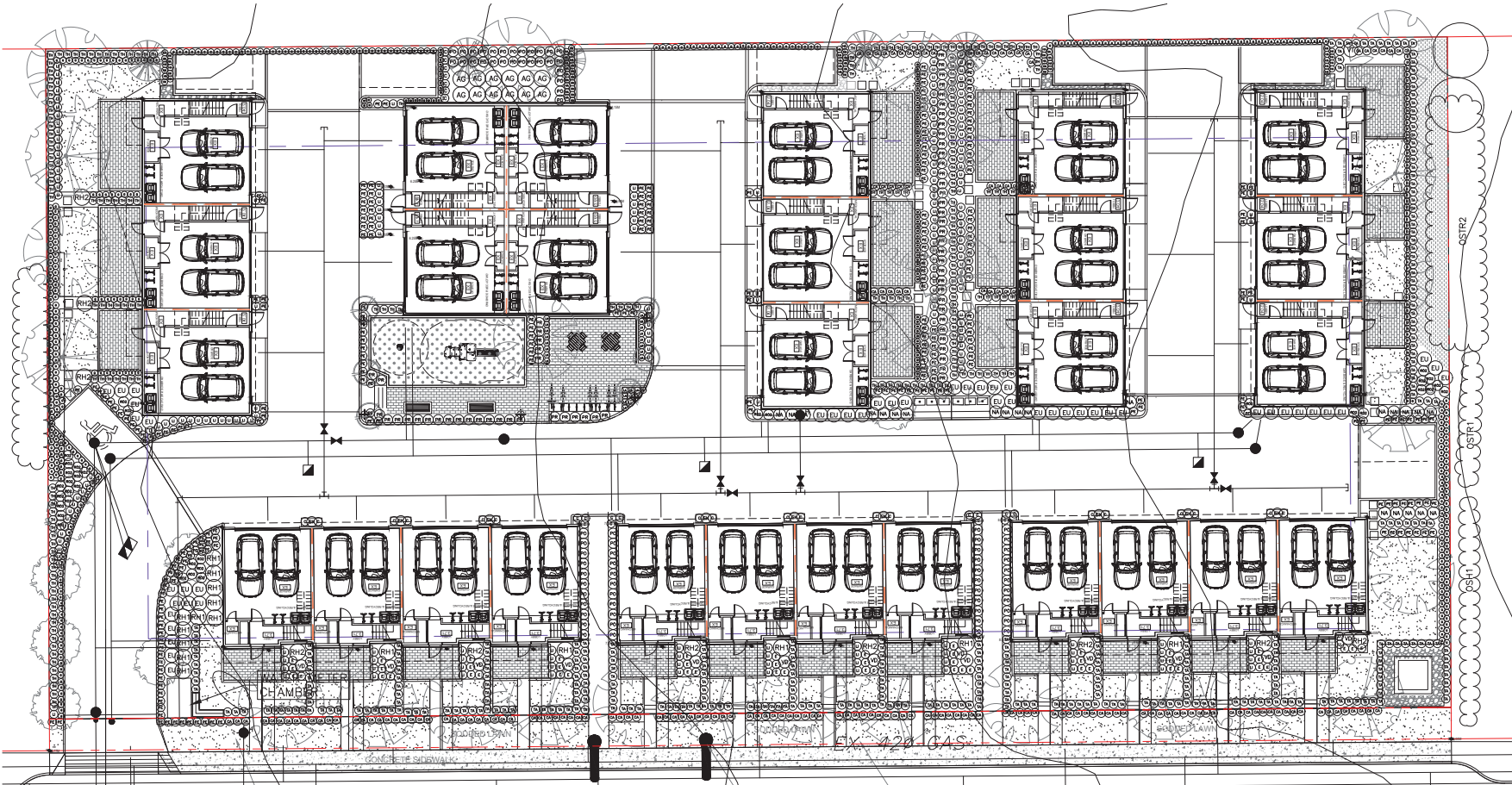
DESIGN: JR

CHKD: MCY

PMG PROJECT NUMBER:

OF 9

22-180



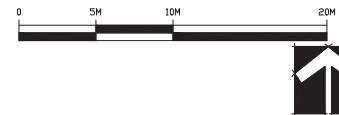
PLANT SCHEDULE

REF	QTY	BOTANICAL NAME	COMMON NAME	PLANTED SIZE / REMARKS
SHRUB				
12		AUCUBA JAPONICA 'GOLDSTRIKE'	MALE JAPANESE AUCUBA	#3 POT, 50CM
48		EUONYMUS ALATA 'COMPACTUS'	COMPACT WINGED BURNING BUSH	#3 POT, 50CM
13		LEUCOTHOE FONTANESIANA 'SCARLETTA'	LEUCOTHOE, RED NEW GROWTH	#3 POT, 50CM
22		NANDINA DOMESTICA	HEAVENLY BAMBOO	#3 POT, 50CM
62		PRUNUS LAURO-CERASUS 'OTTO LUYKEN'	OTTO LUYKEN LAUREL	#3 POT, 50CM
16		RHODODENDRON 'ANNA KRUSCHKE'	RHODODENDRON, BLUE	#3 POT, 50CM
10		RHODODENDRON 'MRS. FURUNVAL'	RHODODENDRON, ROSE PINK, MAY	#3 POT, 50CM
35		ROSA 'MIDLAND RED'	MIDLAND ROSE, RED	#2 POT, 40CM
9		SKIMMIA JAPONICA (90% MALE)	JAPANESE SKIMMIA	#2 POT, 30CM
328		TAKUS 'MIDLAND WICKS'	HICKS YEW	1.2M HT, B&B
200		THUJA OCCIDENTALIS 'SMARAGD'	EMERALD GREEN CEDAR	1.8M HT, B&B
1		VIBURNUM TINUS 'SPRING BOUQUET'	DWARF VIBURNUM	#3 POT, 50CM

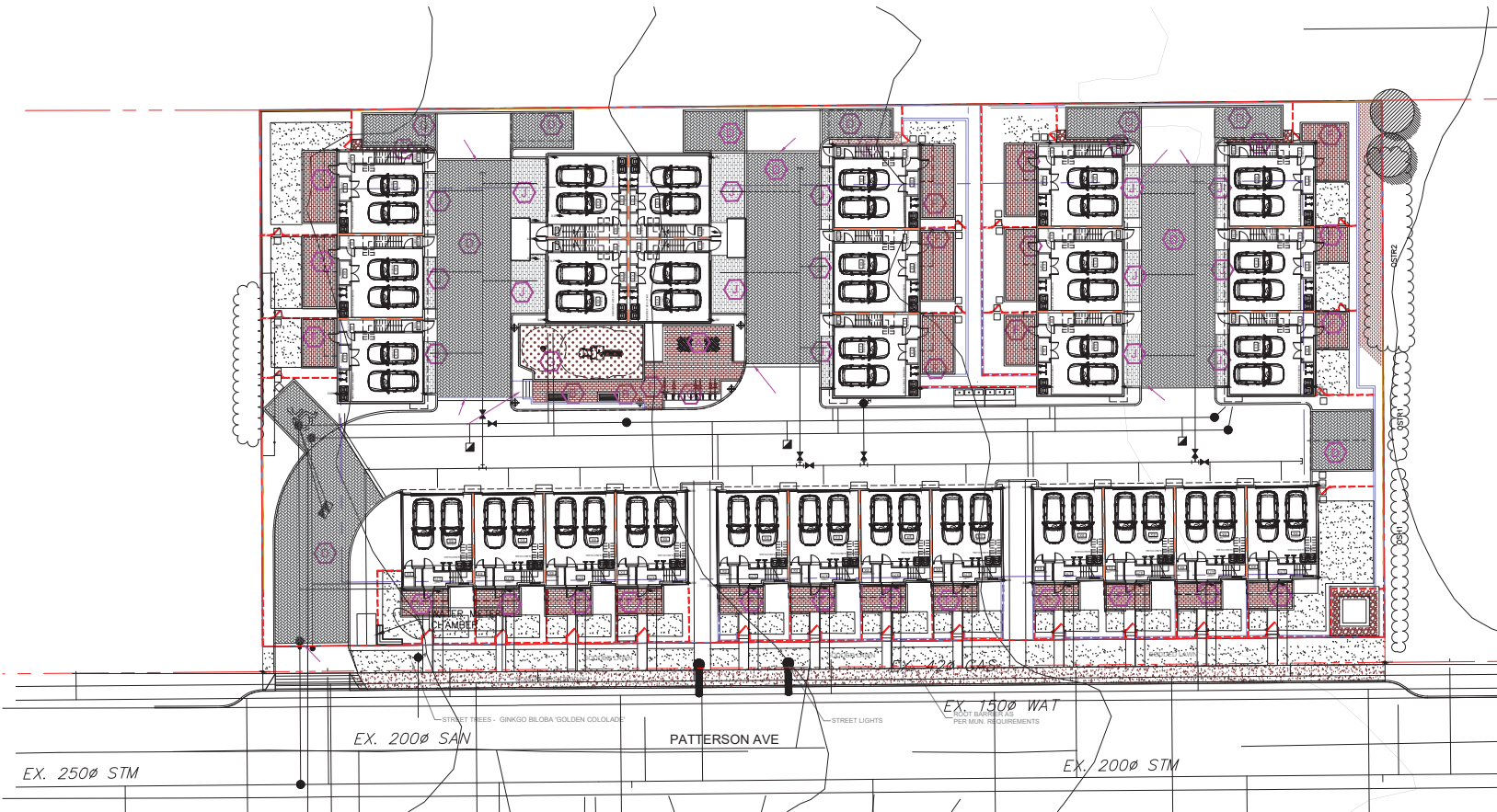
PLANT SCHEDULE

REF	QTY	BOTANICAL NAME	COMMON NAME	PLANTED SIZE / REMARKS
GRASS				
172		CALAMAGROSTIS ACUTIFLORA 'KARL FOERSTER'	FEATHER REED GRASS	#1 POT
30		CAREX OSHIMENSIS 'EVERGOLD'	EVERGOLD JAPANESE SEDGE	#1 POT
59		HAKONECHLOA MACRA 'AUREOLA'	GOLD VAREGATED JAPANESE FOREST GRASS	#1 POT
7		IMPERATA CYLINDRICA 'RED BARON'	BLOOD GRASS	#1 POT
251		PENNISETUM ALOPECUROIDES 'LITTLE BUNNY'	LITTLE BUNNY FOUNTAIN GRASS	#1 POT
75		IBERIS SEMPERVIRENS 'SNOWFLAKE'	SNOWFLAKE EVERGREEN CANDYTUFF	9CM POT
23		LA VANDULA ANGUSTIFOLIA 'HIDCOTE BLUE'	ENGLISH LAVENDER, COMPACT, DEEP PURPLE	#1 POT
49		ERICA 'DARLEVENIS' 'KRAEMER'S RED'	WINTER HEATH, RED	#1 POT
448		GAULTHERIA SHALLOON	SALAL	#1 POT, 20CM
199		LONGICHA PILEATA	PRIVET HONEYBUCKLE	#2 POT, 40CM
72		POLYSTICHUM MUNITUM	WESTERN SWORD FERN	#1 POT, 25CM

NOTES: * PLANT SIZES IN THIS LIST ARE SPECIFIED ACCORDING TO THE BC LANDSCAPE STANDARD AND CANADIAN LANDSCAPE STANDARD, LATEST EDITION. CONTAINER SIZES SPECIFIED AS PER CANA STANDARD. BOTH PLANT SIZE AND CONTAINER SIZE ARE THE MINIMUM ACCEPTABLE SIZES. * REFER TO SPECIFICATIONS FOR DEFINED CONTAINER MEASUREMENTS AND OTHER PLANT MATERIAL REQUIREMENTS. * SEARCH AND REVIEW: MAKE PLANT MATERIAL AVAILABLE FOR OPTIONAL REVIEW BY LANDSCAPE ARCHITECT AT SOURCE OF SUPPLY. AREA OF SEARCH TO INCLUDE LOWER MAINLAND AND FRASER VALLEY. * SUBSTITUTIONS: OBTAIN WRITTEN APPROVAL FROM THE LANDSCAPE ARCHITECT PRIOR TO MAKING ANY SUBSTITUTIONS TO THE SPECIFIED MATERIAL. UNAPPROVED SUBSTITUTIONS WILL BE REJECTED. ALLOW A MINIMUM OF FIVE DAYS PRIOR TO DELIVERY FOR REQUEST TO SUBSTITUTE. SUBSTITUTIONS ARE SUBJECT TO BC LANDSCAPE STANDARD AND CANADIAN LANDSCAPE STANDARD. DEFINITION OF CONDITIONS OF AVAILABILITY. * ALL LANDSCAPE MATERIAL AND WORKMANSHIP MUST MEET OR EXCEED BC LANDSCAPE STANDARD AND CANADIAN LANDSCAPE STANDARD LATEST EDITION. * ALL PLANT MATERIAL MUST BE PROVIDED FROM CERTIFIED DISEASE FREE NURSERY. * BIO-SOLIDS NOT PERMITTED IN GROWING MEDIUM UNLESS AUTHORIZED BY LANDSCAPE ARCHITECT.



22180-9.2P



MATERIAL LEGEND

(A)		MAGLIN 400 GLUSTER SEATING IPE WOOD
(B)		MAGLIN BENCH 970 BACKED IPE WOOD
(C)		MAGLIN 100 BIKE RACKS COLOUR: BLACK
(D)		BELGARD: AQUALINE - 110 X 221 X 80MM COLOUR: MIDNIGHT HERRINGBONE PATTERN
(E)		GRAVEL STRIP
(F)		BELGARD: AQUALINE - 110 X 221 X 80MM COLOUR: NATURAL RUNNING BOND PATTERN
(G)		FIBAR PLAY SURFACE
		CONCRETE
(J)		BELGARD: AQUALINE - 110 X 221 X 80MM COLOUR: MIDNIGHT RUNNING BOND PATTERN

LIGHT LEGEND

	BOLLARD LIGHT: LIGMAN LBX BOLLARD, MATT SILVER DARK GRAY CERTIFIED
--	--

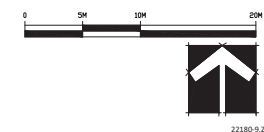
NOTE: LIGHTING SPECIFICATION PER ELECTRICAL DWG.

FENCE LEGEND

	42' HT. WOOD FENCE
	6' HT. WOOD FENCE
	ENTRY SIGNAGE
	RETAINING WALL



LIGMAN LBX BOLLARD LIGHT



©Copyright reserved. This drawing and design is the property of PMG Landscape Architects and may not be reproduced or used for other projects without their permission.

pmg
LANDSCAPE ARCHITECTS
Suite C100 - 4185 Still Creek Drive
Burnaby, British Columbia V5C 6G9
p. 604 294-0011 • f. 604 294-0022

SEAL:

NO.	DATE	REVISION DESCRIPTION	DR.
8	24 OCT 28	COMMENTS: NEW SITE PLAN	MM
7	24 AUG 26	NEW SITE PLAN	MM
6	24 JUN 25	REVISION FOR SP	MM
5	23 APR 22	NEW SITE PLAN/COMMENTS	MM
04	23 OCT 13	NEW SITE PLAN	MC
03	23 SEP 13	REVISION FOR SP	MC
02	23 SEP 13	NEW SITE PLAN	MC
01	23 APR 26	GRADING PLAN NEW SITE PLAN	MC

CLIENT:

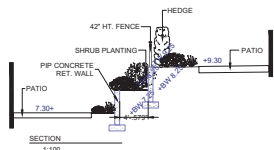
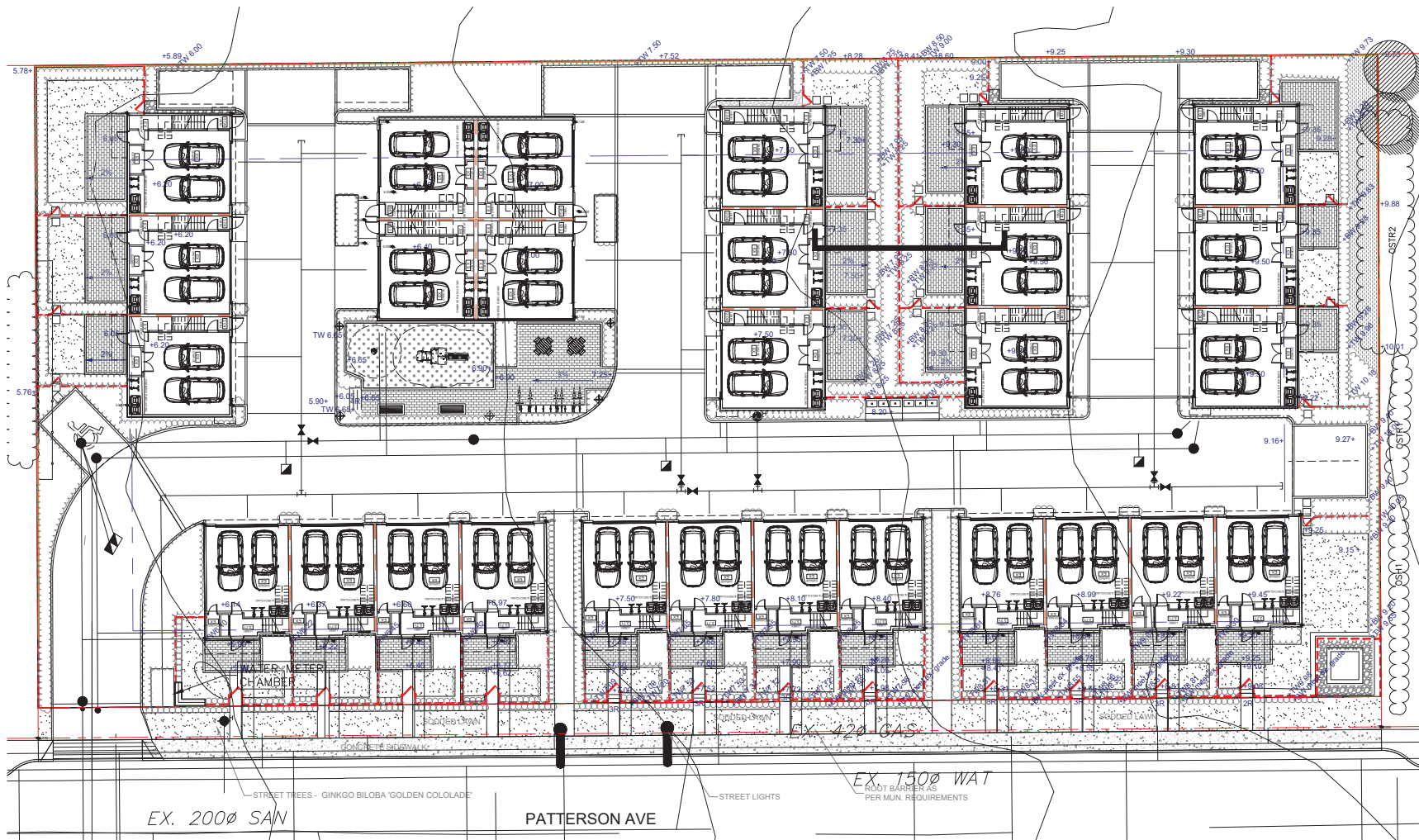


PROJECT:
TOWNHOUSE DEVELOPMENT
20247 PATTERSON AVENUE
MAPLE RIDGE, BC

DRAWING TITLE:
MATERIAL PLAN

DATE: 23 APR 19 DRAWING NUMBER:
SCALE: 1:200
DRAWN: JR
DESIGN: JR
CHKD: MCY
PMG PROJECT NUMBER: 22-180

L4
OF 9



©Copyright reserved. This drawing and design is the property of PMG Landscape Architects and may not be reproduced or used for other projects without their permission.

pmg
LANDSCAPE
ARCHITECTS
Suite C100 - 4185 Still Creek Drive
Burnaby, British Columbia V5C 6G9
p. 604 294-0011 • f. 604 294-0022

SEAL:

NO.	DATE	REVISION DESCRIPTION	DR.
8	24 OCT 28	COMMENTS/ NEW SITE PLAN	MM
7	24 AUG 26	NEW SITE PLAN	MM
6	24 JUN 25	REVISION FOR SP	MM
5	23 APR 23	NEW SITE PLACEMENTS	MM
04	23 OCT 23	NEW SITE PLAN	ML
03	23 SEP 23	REVISION FOR SP	ML
02	23 SEP 23	NEW SITE PLAN	ML
01	23 APR 23	GRADING PLAN NEW SITE PLAN	ML

CLIENT:

Paddington
Properties

PROJECT:

**TOWNHOUSE
DEVELOPMENT**

**20247 PATTERSON AVENUE
MAPLE RIDGE, BC**

DRAWING TITLE:

**GRADING
PLAN**

DATE: 23 APR 19 DRAWING NUMBER:

SCALE: 1:150

DRAWN: JR

DESIGN: JR

CHKD: MCY

L5

OF 9

PMG PROJECT NUMBER:

22-180

22180-9.2P