

**SUBDIVISION PLAN OF LOT 6 SECTION 10 TOWNSHIP 12
NEW WESTMINSTER DISTRICT PLAN EPP118975**

PLAN EPP141024

B.C.G.S. 92G.028

THE UTM COORDINATES AND ESTIMATED ABSOLUTE ACCURACY ACHIEVED ARE DERIVED FROM THE MASCOT PUBLISHED COORDINATES AND STANDARD DEVIATIONS FOR GEODETIC CONTROL MONUMENTS 88H1387 AND 88H1389.

THIS PLAN SHOWS HORIZONTAL GROUND LEVEL DISTANCES UNLESS OTHERWISE SPECIFIED. TO COMPUTE GRID DISTANCES, MULTIPLY GROUND LEVEL DISTANCES BY THE COMBINED FACTOR OF 0.9996026. THE AVERAGE COMBINED FACTOR HAS BEEN DETERMINED BASED ON GEODETIC CONTROL MONUMENT 88H1389.

GRID BEARINGS ARE DERIVED FROM OBSERVATIONS BETWEEN GEODETIC CONTROL MONUMENTS 88H1387 AND 88H1389 AND ARE REFERRED TO THE CENTRAL MERIDIAN OF UTM ZONE 10.

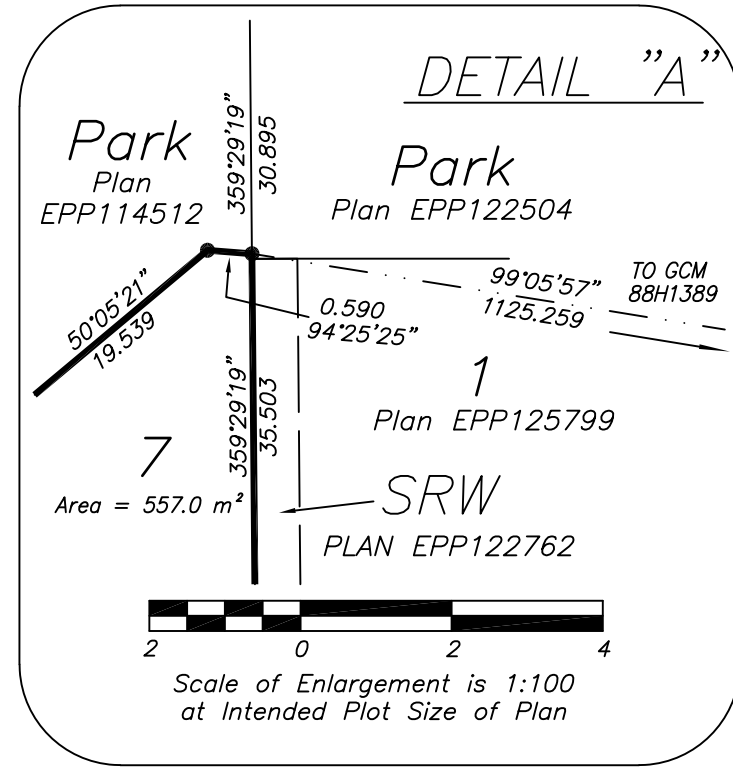
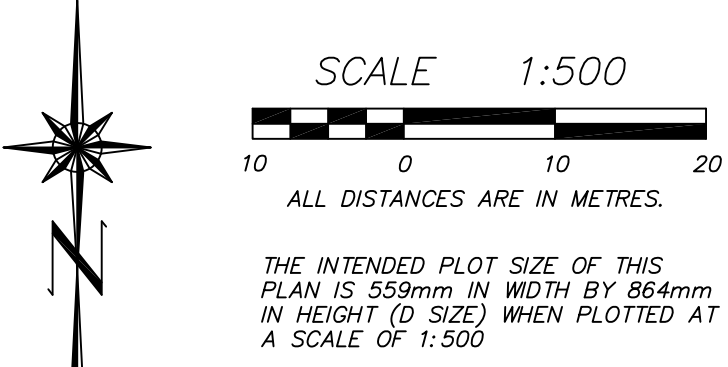
THIS PLAN LIES WITHIN
INTEGRATED SURVEY AREA
No. 36, MAPLE RIDGE,
NAD 83 (CSRS) 4.0.0.BC.1.MVRD

LEGEND

ALL DISTANCES ARE IN METRES AND DECIMALS THEREOF

- ⊙ - DENOTES CONTROL MONUMENT FOUND
- - DENOTES STANDARD IRON POST FOUND
- - DENOTES STANDARD IRON POST PLACED
- ⊙ - DENOTES NON-STANDARD IRON POST FOUND
- (1) - NON-STANDARD IRON POST (2.5 cm DIAMETER IRON PIPE)

THIS PLAN SHOWS ONE OR MORE WITNESS POSTS WHICH ARE NOT SET ON THE TRUE CORNER(S)



DATUM: NAD83 (CSRS) 4.0.0.BC.1.MVRD, UTM ZONE 10.				
CONTROL MONUMENT	NORTHING	EASTING	ESTIMATED ABSOLUTE ACCURACY	COMBINED FACTOR
88H1389	5450045.618	534211.370	±0.029	0.9996026
88H1387	5449823.803	534118.114	±0.024	0.9996025

INSPECTED UNDER THE LAND TITLE ACT ON THE 7TH DAY OF JULY, 2025

THIS PLAN LIES WITHIN THE JURISDICTION OF THE APPROVING OFFICER FOR THE CITY OF MAPLE RIDGE

THE FIELD SURVEY REPRESENTED BY THIS PLAN WAS COMPLETED ON THE 11TH DAY OF SEPTEMBER, 2024. MIKE BERNEMANN, B.C.L.S. #793

BENNETT LAND SURVEYING LTD.
22371 ST. ANNE AVENUE,
MAPLE RIDGE, B.C. V2X 2E7
PHONE: 604-463-2509

DRAWING # 150132SUB 3 R1

THIS PLAN LIES WITHIN THE METRO VANCOUVER REGIONAL DISTRICT