

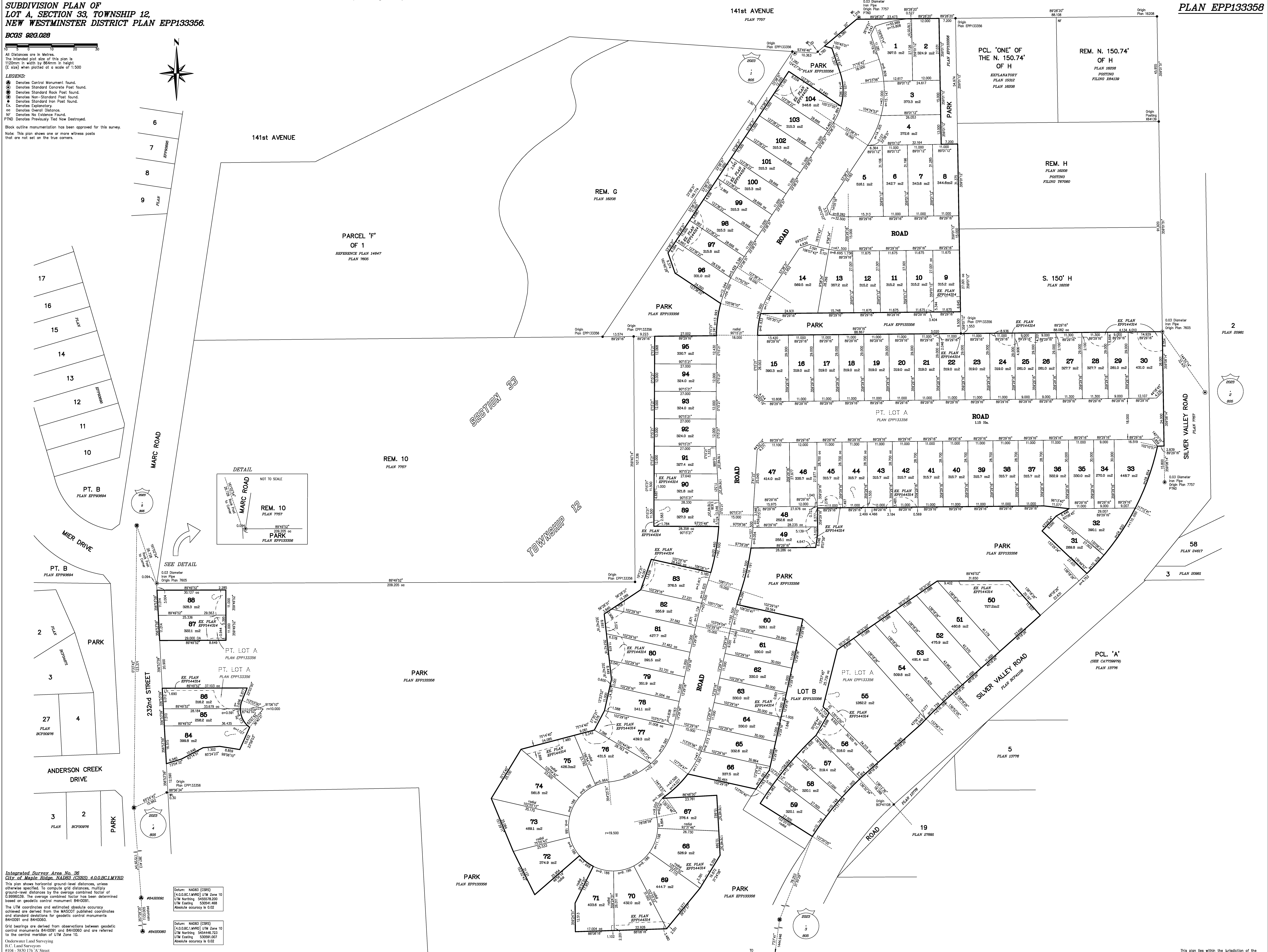
**SUBDIVISION PLAN OF
LOT A, SECTION 33, TOWNSHIP 12,
NEW WESTMINSTER DISTRICT PLAN EPP133356.**

BCGS 023.028

All Distances are in Metres.
The intended plot size of this plan is
1120m in width by 856m in height.
(E size) when plotted at a scale of 1:500

- LEGEND:**
- Denotes Control Monument found.
 - Denotes Standard Concrete Post found.
 - Denotes Standard Rock Post found.
 - Denotes Non-Standard Post found.
 - Denotes Standard Iron Post found.
 - Denotes Explanatory.
 - Denotes Overall Distance.
 - Denotes No Evidence Found.
 - Denotes Previously Tied Now Destroyed.

Block outline monumentation has been approved for this survey.
Note: This plan shows one or more witness posts
that are not set on the true corners.



Integrated Survey Area No. 38
City of Maple Ridge, MAJOR (CSRS) 4.0/0.0/CLMYRD
This plan shows horizontal ground-level distances, unless
otherwise specified. To compute grid distances, multiply
ground-level distances by the average combined factor of
0.9996039. The average combined factor has been determined
based on geodetic control monument 8410091.
The UTM coordinates and estimated absolute accuracy
achieved are derived from the MASCOT published coordinates
and standard deviations for geodetic control monuments
8410091 and 8410092.

Grid bearings are derived from observations between geodetic
control monuments 8410091 and 8410060 and are referred to
the central meridian of UTM Zone 10.

Onderwater Land Surveying
B.C. Land Surveyors
#114 - 3830 176th Street
Coquitlam B.C.
www.underwater.ca
File: M20-34_52
LISA File: 10500-30-1714

Datum: NAD83 (CSRS)
[4.0/0.0/CLMYRD] UTM Zone 10
UTM Northing 5450378.200
UTM Easting 530541.468
Northward accuracy is 0.02

Datum: NAD83 (CSRS)
[4.0/0.0/CLMYRD] UTM Zone 10
UTM Northing 5454446.723
UTM Easting 530591.007
Absolute accuracy is 0.02