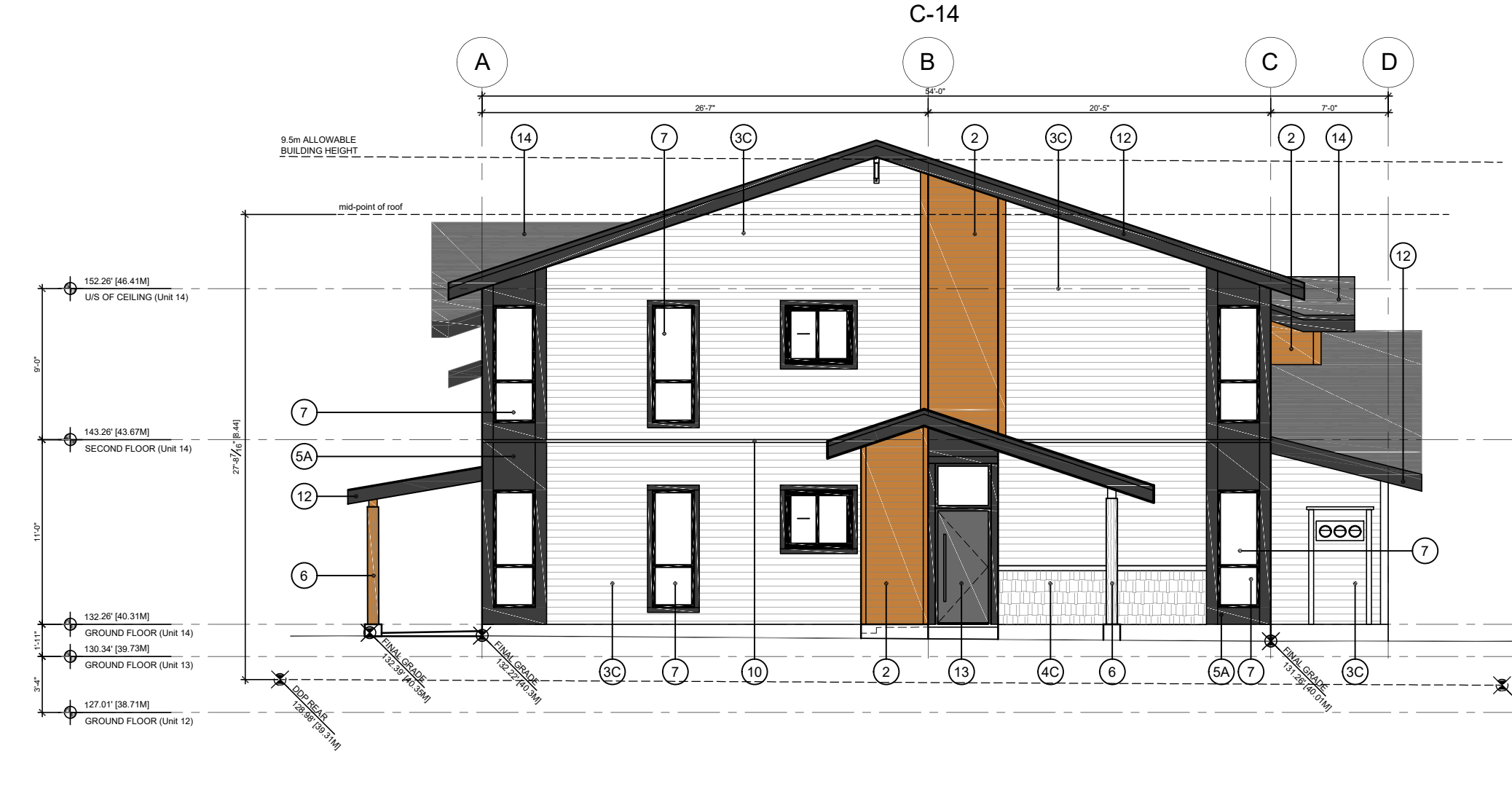


1 BLOCK 3 - FRONT ELEVATION  
DP3.2 1:100

2 BLOCK 3 - SIDE ELEVATION  
DP3.2 1:100



3 BLOCK 3 - REAR ELEVATION  
DP3.2 1:100

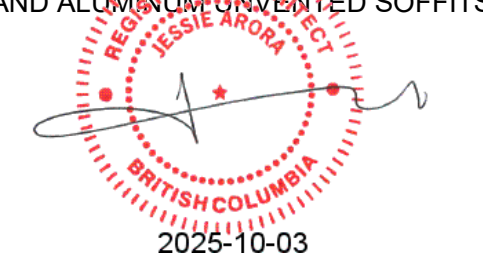


4 BLOCK 3 - SIDE ELEVATION  
DP3.2 1:100

MATERIAL FINISHES LEGEND

1A	THIN STONE SIDING - ALPINE LEDGESTONE - WINTERHAVEN
1B	THIN STONE SIDING - ALPINE LEDGESTONE - DARKRIDGE
2	WOODTONED FIBER CEMENT SIDING - SUMMER WHEAT
3A	FIBER CEMENT SIDING - NIGHT GREY (DARK GREY)
3B	FIBER CEMENT SIDING - GREY SLATE (LIGHT GREY)
3C	FIBER CEMENT SIDING - ARCTIC WHITE (WHITE)
4A	FIBER CEMENT SHAKES - NIGHT GREY (DARK GREY)
4B	FIBER CEMENT SHAKES - COBBLE STONE (BEIGE)
4C	FIBER CEMENT SHAKES - ARCTIC WHITE (WHITE)
5A	FIBER CEMENT PANEL (SMOOTH) - NIGHT GREY (DARK GREY)
5B	FIBER CEMENT PANEL (SMOOTH) - GREY SLATE (LIGHT GREY)
5C	FIBER CEMENT PANEL (SMOOTH) - COBBLE STONE (BEIGE)
6	STAINED HEAVY TIMBER POST
7	VINYL WINDOW & DOOR - BLACK WITH DOUBLE LAYERED GLAZING
8	ALUMINUM RAILING WITH GLASS - BLACK
9	ALUMINUM RAILING - BLACK
10	THROUGH WALL FLASHING TO MATCH ADJACENT CLADDING COLOUR
11	WAINSCOT CAP - STONE GREY
12	FIBER CEMENT FASCIA AND TRIMS - PAINTED (DARK GREY)
13	FIBERGLASS ENTRY & GARAGE DOOR
14	GREY ASPHALT SHINGLES
15	ELECTRICAL METERS PAINTED TO COLOUR MATCH ADJACENT FINISH
16	CONCRETE WALL WITH ELASTOMERIC PAINT (COLOUR TO MATCH ADJACENT FINISH)

- NOTE:
- AS PER WILD FIRE REPORT, ALL UNITS TO HAVE:
    - ALUMINUM PERFORATED SOFFITS
    - SCREENED GUTTERS
    - ALL OPERABLE OPENINGS TO HAVE FIBERGLASS SCREEN
    - HARDIBOARD EAVES
    - HEAVY TIMBER POST & BEAM OR WITH FIRE TREATED CLADDING
  - AT BLOCKS 3 AND 4, EXTERIOR WALL PROJECTIONS LESS THAN 2.4M OF ADJACENT BUILDING TO HAVE NON-COMBUSTIBLE FINISHES: CLADDING, ROOF EAVES, AND FASCIA, AND ALUMINUM VENTED SOFFITS.



# Proposed Residential Development

23689 23717 FERN CRESCENT, MAPLE RIDGE, B.C.

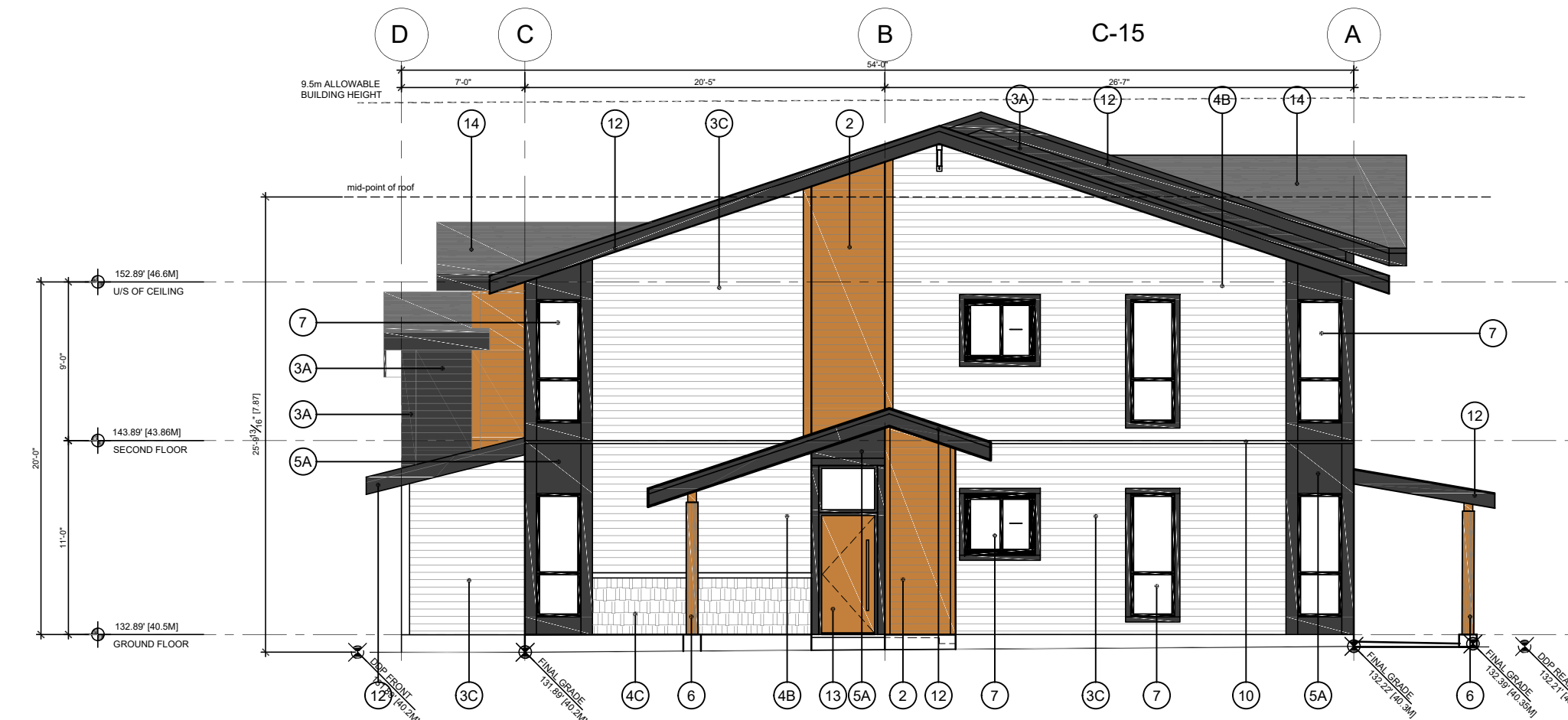
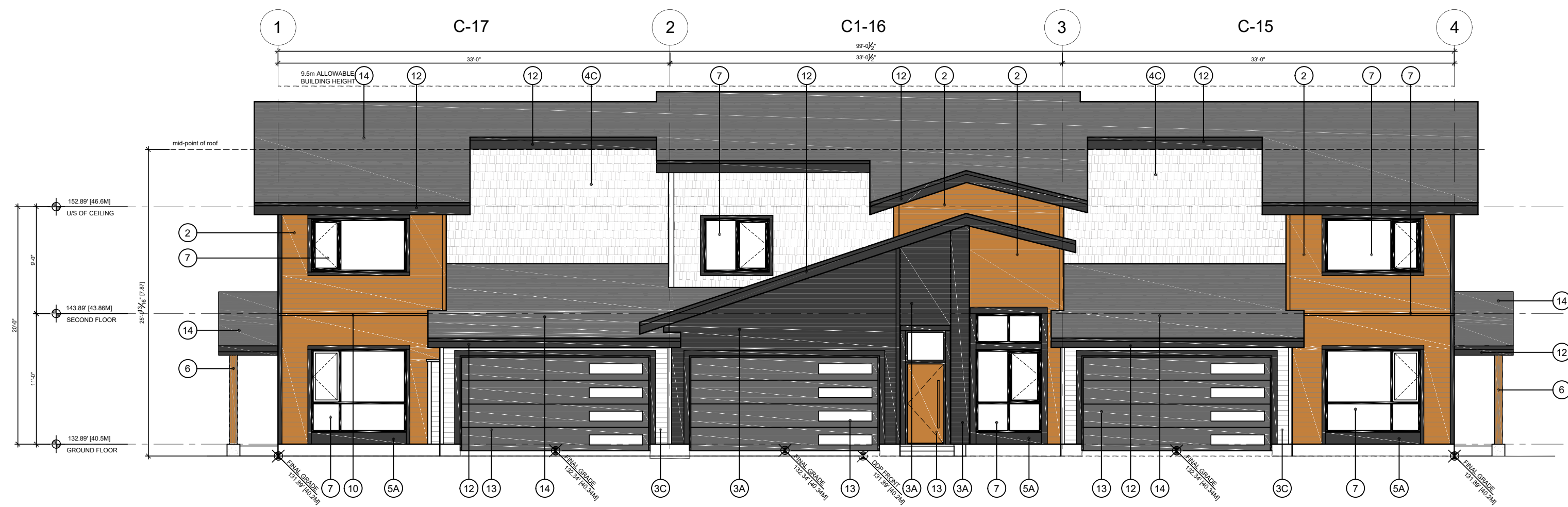
WOOD LOCK DEVELOPMENTS  
ATELIER PACIFIC ARCHITECTURE INC.

MAY 13, 2021  
REVISED: OCTOBER 6, 2025

# DP 3.2

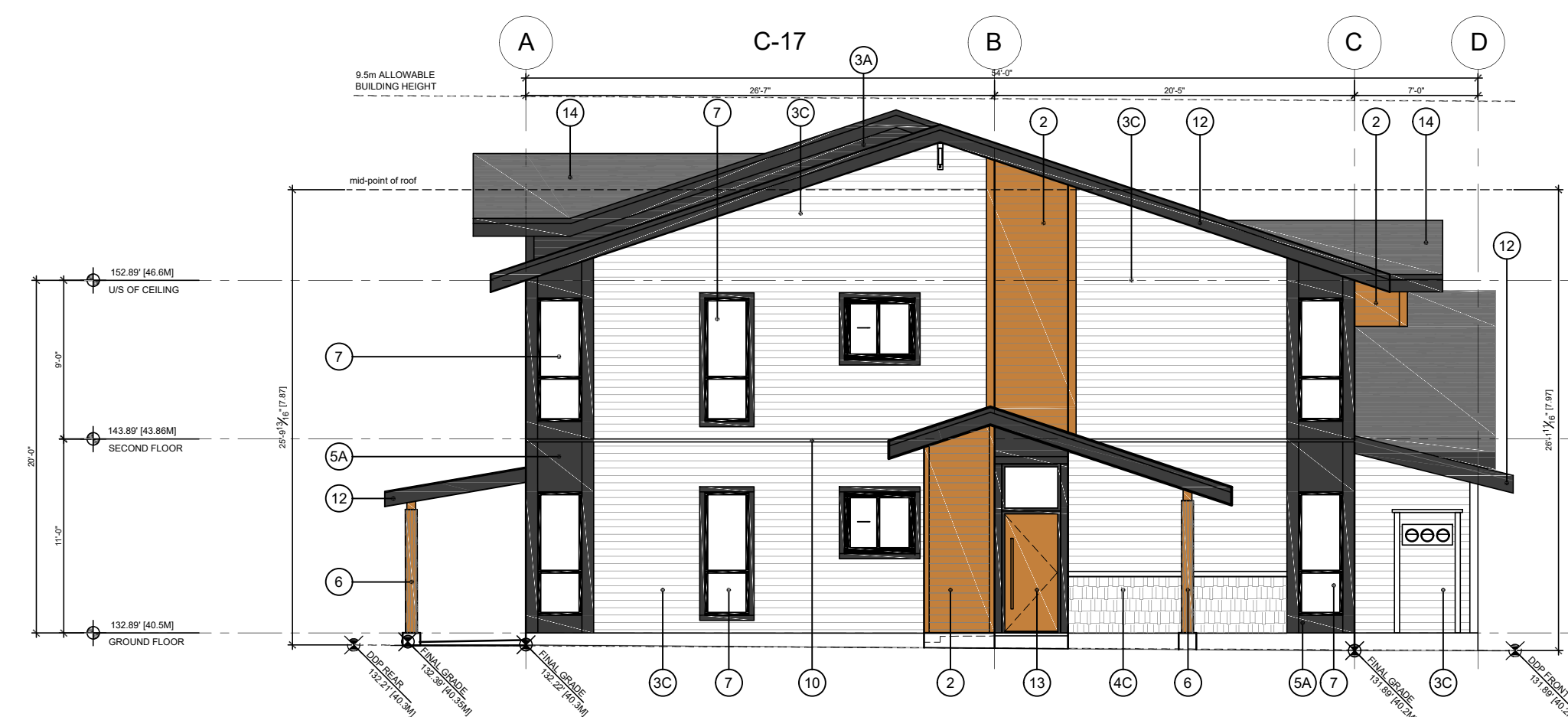
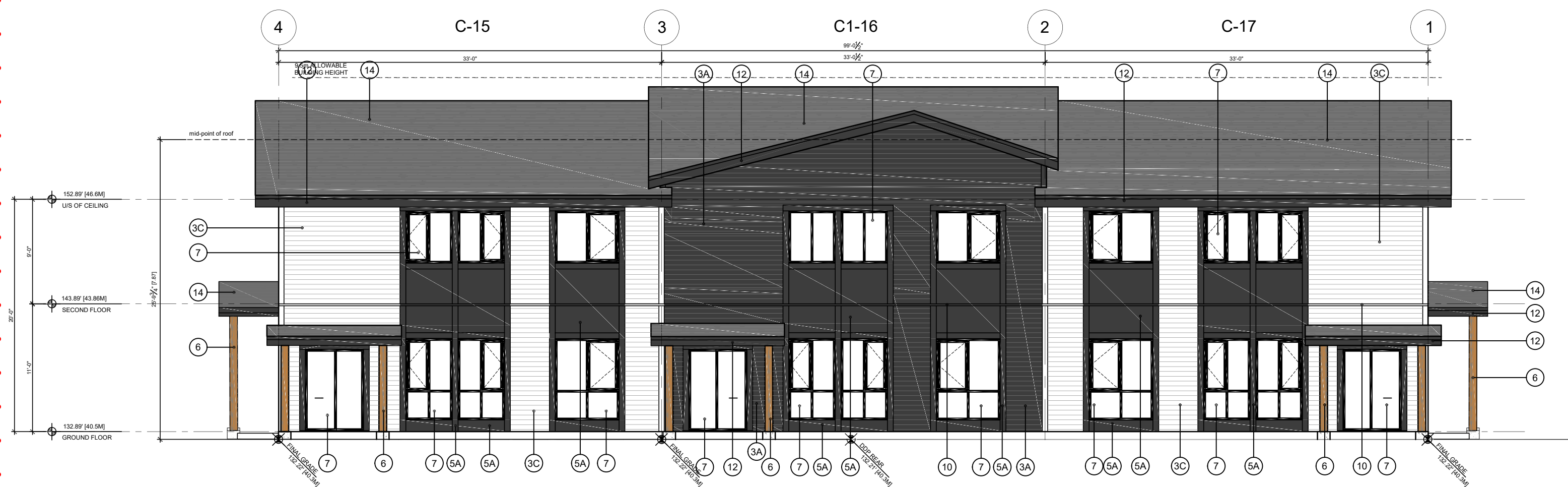
ELEVATIONS -  
BLOCK 3





**1** BLOCK 4 - FRONT ELEVATION  
DP3.3 1:100

**2** BLOCK 4 - SIDE ELEVATION  
DP3.3 1:100



**3** BLOCK 4 - REAR ELEVATION  
DP3.3 1:100

**4** BLOCK 4 - SIDE ELEVATION  
DP3.3 1:100

MATERIAL FINISHES LEGEND

1A	THIN STONE SIDING - ALPINE LEDGESTONE - WINTERHAVEN
1B	THIN STONE SIDING - ALPINE LEDGESTONE - DARKRIDGE
2	WOODTONE FIBER CEMENT SIDING - SUMMER WHEAT
3A	FIBER CEMENT SIDING - NIGHT GREY (DARK GREY)
3B	FIBER CEMENT SIDING - GREY SLATE (LIGHT GREY)
3C	FIBER CEMENT SIDING - ARCTIC WHITE (WHITE)
4A	FIBER CEMENT SHAKES - NIGHT GREY (DARK GREY)
4B	FIBER CEMENT SHAKES - COBBLE STONE (BEIGE)
4C	FIBER CEMENT SHAKES - ARCTIC WHITE (WHITE)
5A	FIBER CEMENT PANEL (SMOOTH) - NIGHT GREY (DARK GREY)
5B	FIBER CEMENT PANEL (SMOOTH) - GREY SLATE (LIGHT GREY)
5C	FIBER CEMENT PANEL (SMOOTH) - COBBLE STONE (BEIGE)
6	STAINED HEAVY TIMBER POST
7	VINYL WINDOW & DOOR - BLACK WITH DOUBLE LAYERED GLAZING
8	ALUMINUM RAILING WITH GLASS - BLACK
9	ALUMINUM RAILING - BLACK
10	THROUGH WALL FLASHING TO MATCH ADJACENT CLADDING COLOUR
11	WAINSCOT CAP - STONE GREY
12	FIBER CEMENT FASCIA AND TRIMS - PAINTED (DARK GREY)
13	FIBERGLASS ENTRY & GARAGE DOOR
14	GREY ASPHALT SHINGLES
15	ELECTRICAL METERS PAINTED TO COLOUR MATCH ADJACENT FINISH
16	CONCRETE WALL WITH ELASTOMERIC PAINT (COLOUR TO MATCH ADJACENT FINISH)

- NOTE:
- AS PER WILD FIRE REPORT, ALL UNITS TO HAVE:
    - ALUMINUM PERFORATED SOFFITS
    - SCREENED GUTTERS
    - ALL OPERABLE OPENINGS TO HAVE FIBERGLASS SCREEN
    - HARDIBOARD EAVES
    - HEAVY TIMBER POST & BEAM OR WITH FIRE TREATED CLADDING
  - AT BLOCKS 3 AND 4, EXTERIOR WALL PROJECTIONS LESS THAN 2.4M OF ADJACENT BUILDING TO HAVE NON-COMBUSTIBLE FINISHES: CLADDING, ROOF EAVES, AND FASCIA, AND ALUMINUM UNVENTED SOFFITS.



# Proposed Residential Development

23689 23717 FERN CRESCENT, MAPLE RIDGE, B.C.

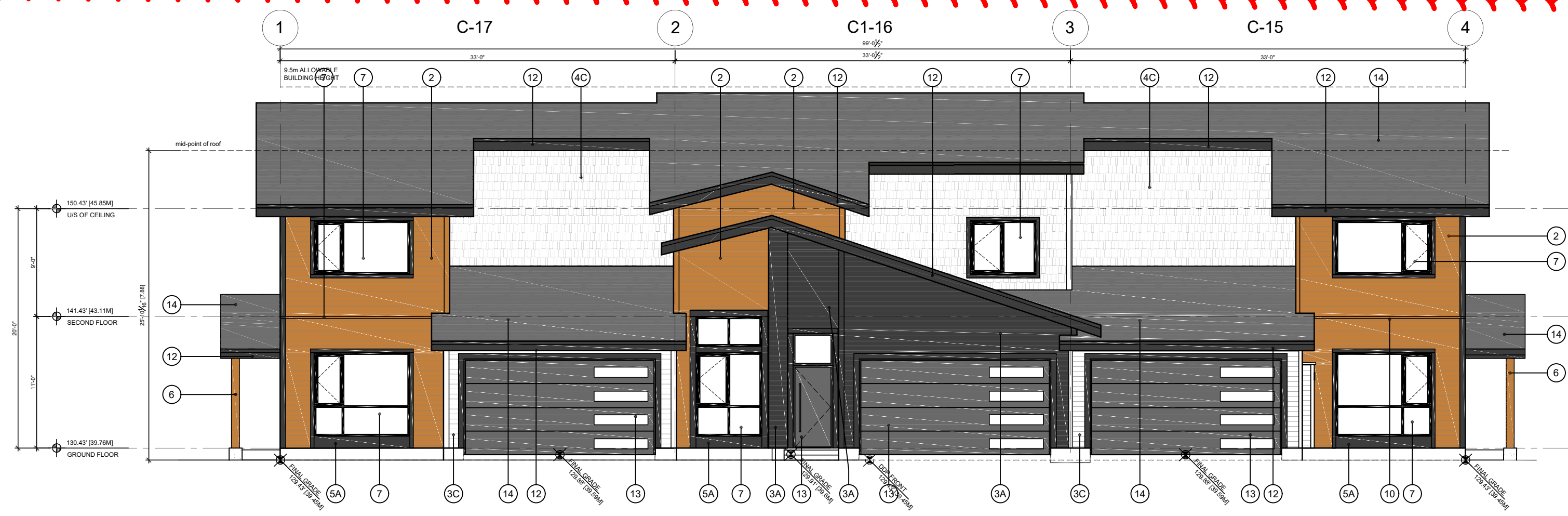
WOOD LOCK DEVELOPMENTS  
ATELIER PACIFIC ARCHITECTURE INC.

MAY 13, 2021  
REVISED: OCTOBER 6, 2025

# DP 3.3

ELEVATIONS -  
BLOCK 4

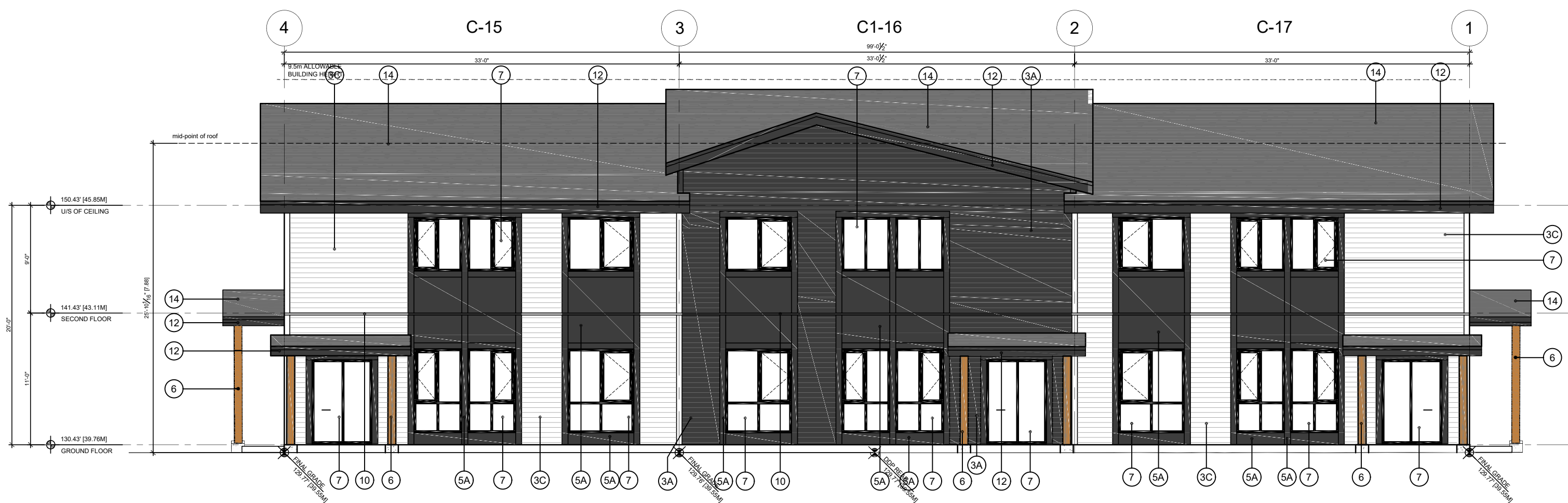




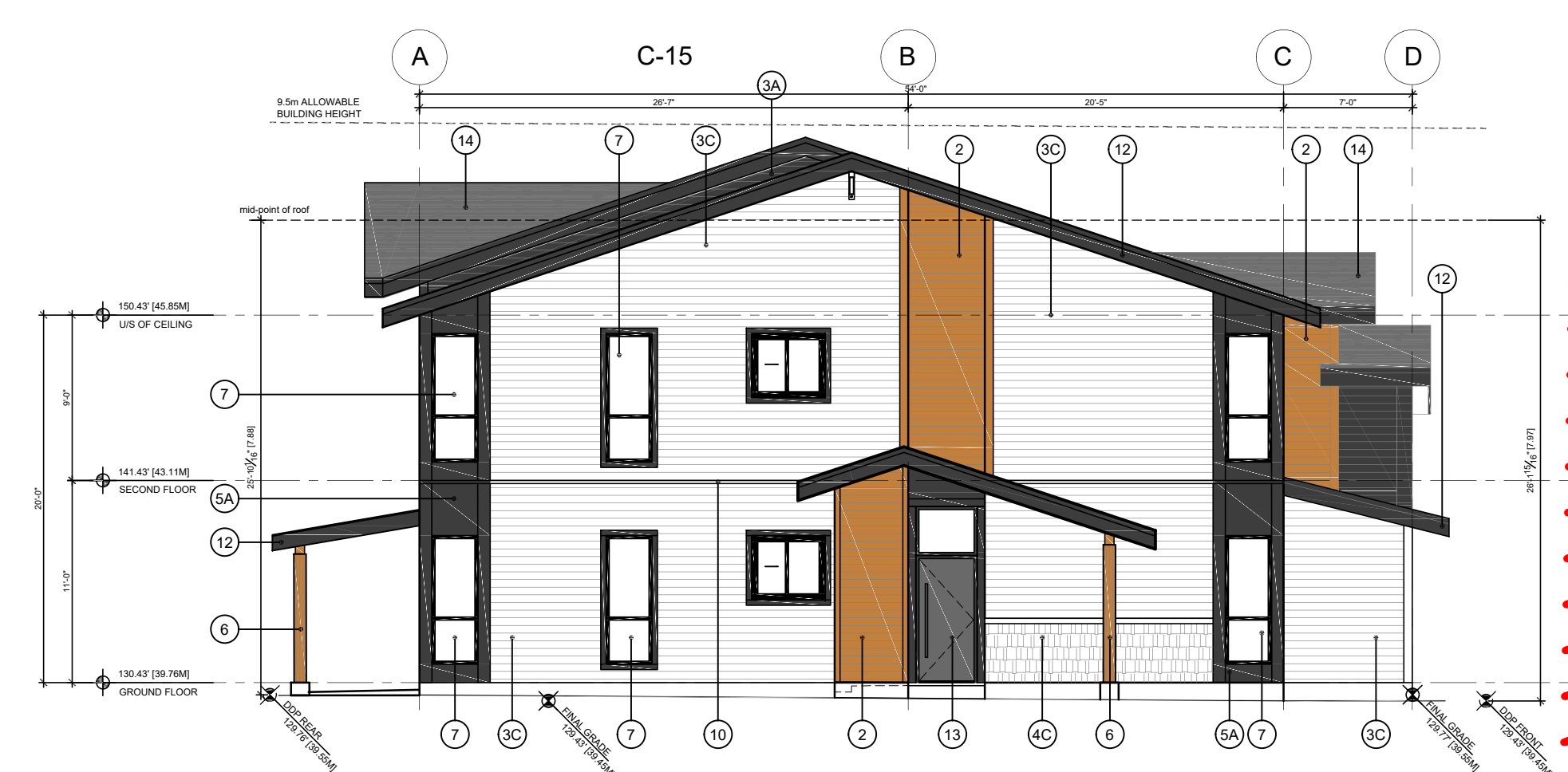
**1** BLOCK 5 - FRONT ELEVATION  
DP3.4 1:100



**2** BLOCK 5 - SIDE ELEVATION  
DP3.4 1:100



**3** BLOCK 5 - REAR ELEVATION  
DP3.4 1:100



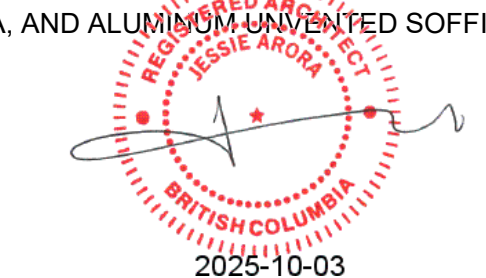
**4** BLOCK 5 - SIDE ELEVATION  
DP3.4 1:100

**MATERIAL FINISHES LEGEND**

1A	THIN STONE SIDING - ALPINE LEDGESTONE - WINTERHAVEN
1B	THIN STONE SIDING - ALPINE LEDGESTONE - DARKRIDGE
2	WOODTONE FIBER CEMENT SIDING - SUMMER WHEAT
3A	FIBER CEMENT SIDING - NIGHT GREY (DARK GREY)
3B	FIBER CEMENT SIDING - GREY SLATE (LIGHT GREY)
3C	FIBER CEMENT SIDING - ARCTIC WHITE (WHITE)
4A	FIBER CEMENT SHAKES - NIGHT GREY (DARK GREY)
4B	FIBER CEMENT SHAKES - COBBLE STONE (BEIGE)
4C	FIBER CEMENT SHAKES - ARCTIC WHITE (WHITE)
5A	FIBER CEMENT PANEL (SMOOTH) - NIGHT GREY (DARK GREY)
5B	FIBER CEMENT PANEL (SMOOTH) - GREY SLATE (LIGHT GREY)
5C	FIBER CEMENT PANEL (SMOOTH) - COBBLE STONE (BEIGE)
6	STAINED HEAVY TIMBER POST
7	VINYL WINDOW & DOOR - BLACK WITH DOUBLE LAYERED GLAZING
8	ALUMINUM RAILING WITH GLASS - BLACK
9	ALUMINUM RAILING - BLACK
10	THROUGH WALL FLASHING TO MATCH ADJACENT CLADDING COLOUR
11	WAINSCOT CAP - STONE GREY
12	FIBER CEMENT FASCIA AND TRIMS - PAINTED (DARK GREY)
13	FIBERGLASS ENTRY & GARAGE DOOR
14	GREY ASPHALT SHINGLES
15	ELECTRICAL METERS PAINTED TO COLOUR MATCH ADJACENT FINISH
16	CONCRETE WALL WITH ELASTOMERIC PAINT (COLOUR TO MATCH ADJACENT FINISH)

**NOTE:**

- AS PER WILD FIRE REPORT, ALL UNITS TO HAVE:
  - ALUMINUM PERFORATED SOFFITS
  - SCREENED GUTTERS
  - ALL OPERABLE OPENINGS TO HAVE FIBERGLASS SCREEN
  - HARDBOARD EAVES
  - HEAVY TIMBER POST & BEAM OR WITH FIRE TREATED CLADDING
- AT BLOCKS 3 AND 4, EXTERIOR WALL PROJECTIONS LESS THAN 2.4M OF ADJACENT BUILDING TO HAVE NON-COMBUSTIBLE FINISHES: CLADDING, ROOF EAVES, AND FASCIA, AND ALUMINUM UNVENTED SOFFITS.



# Proposed Residential Development

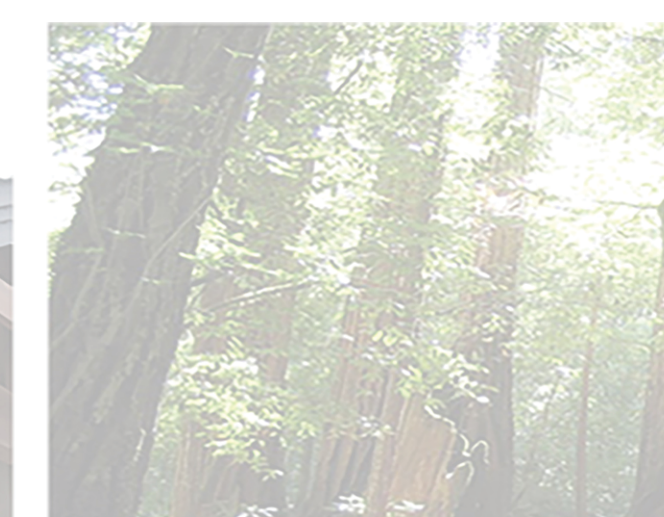
23689 23717 FERN CRESCENT, MAPLE RIDGE, B.C.

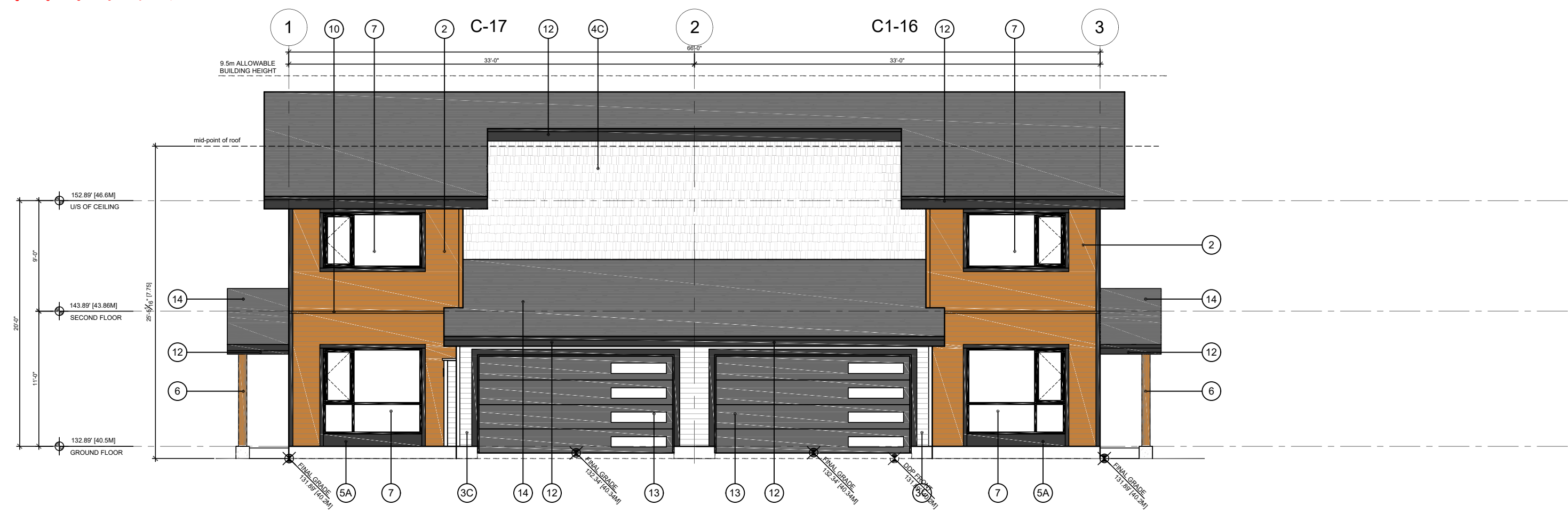
WOOD LOCK DEVELOPMENTS  
ATELIER PACIFIC ARCHITECTURE INC.

MAY 13, 2021  
REVISED: OCTOBER 6, 2025

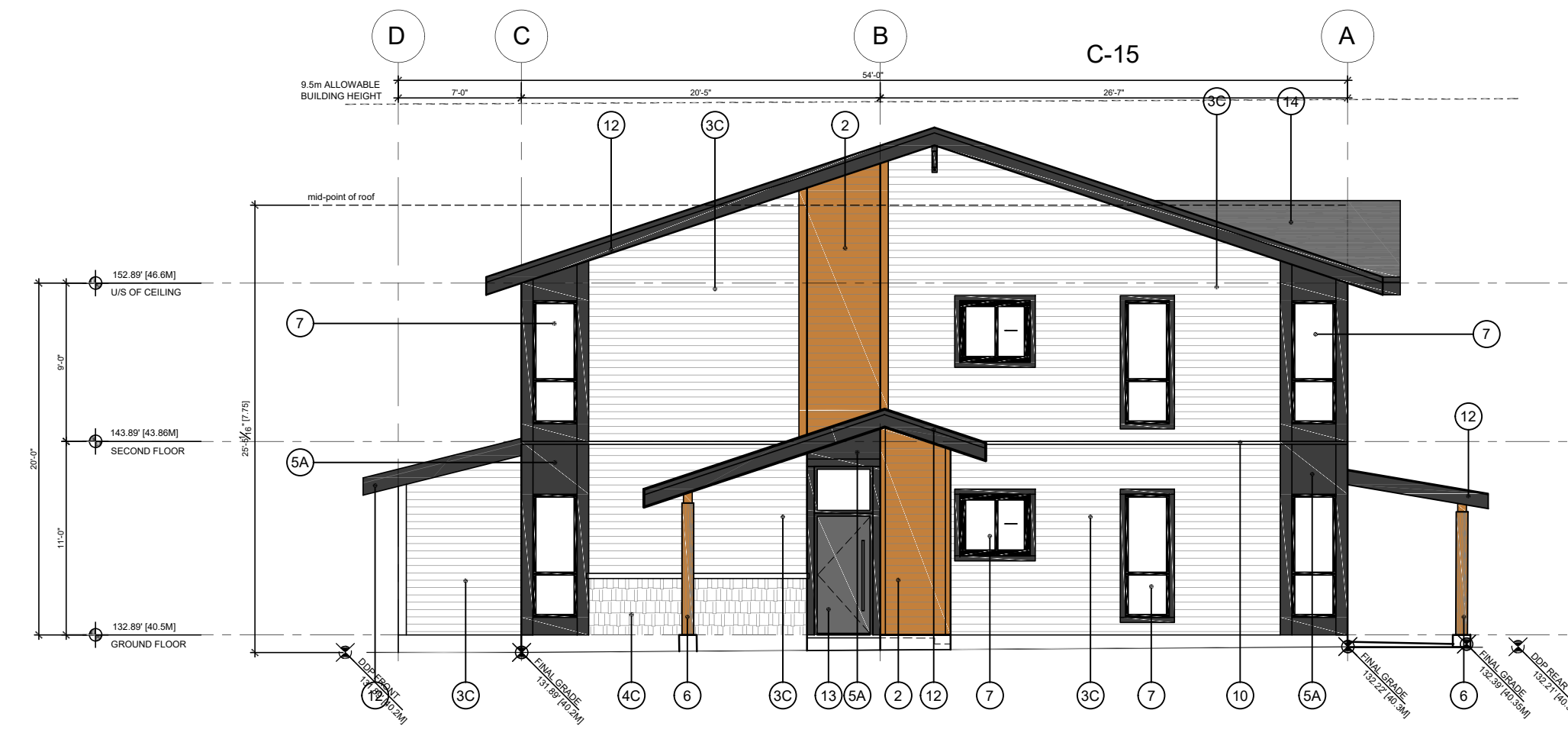
# DP 3.4

ELEVATIONS -  
BLOCK 5

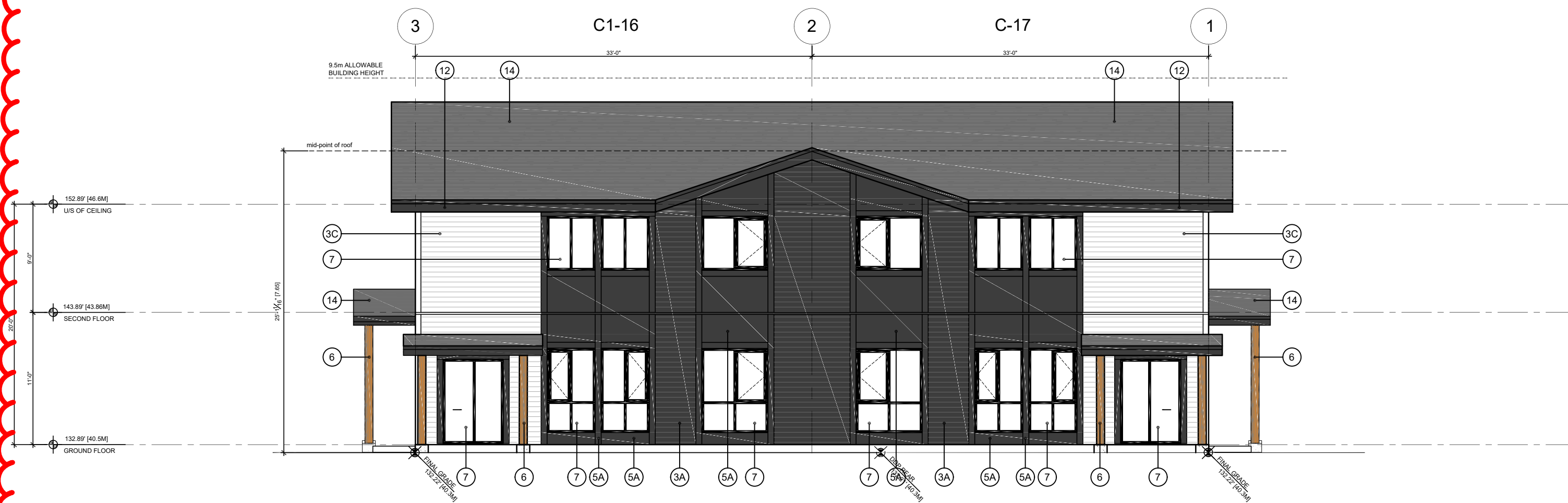




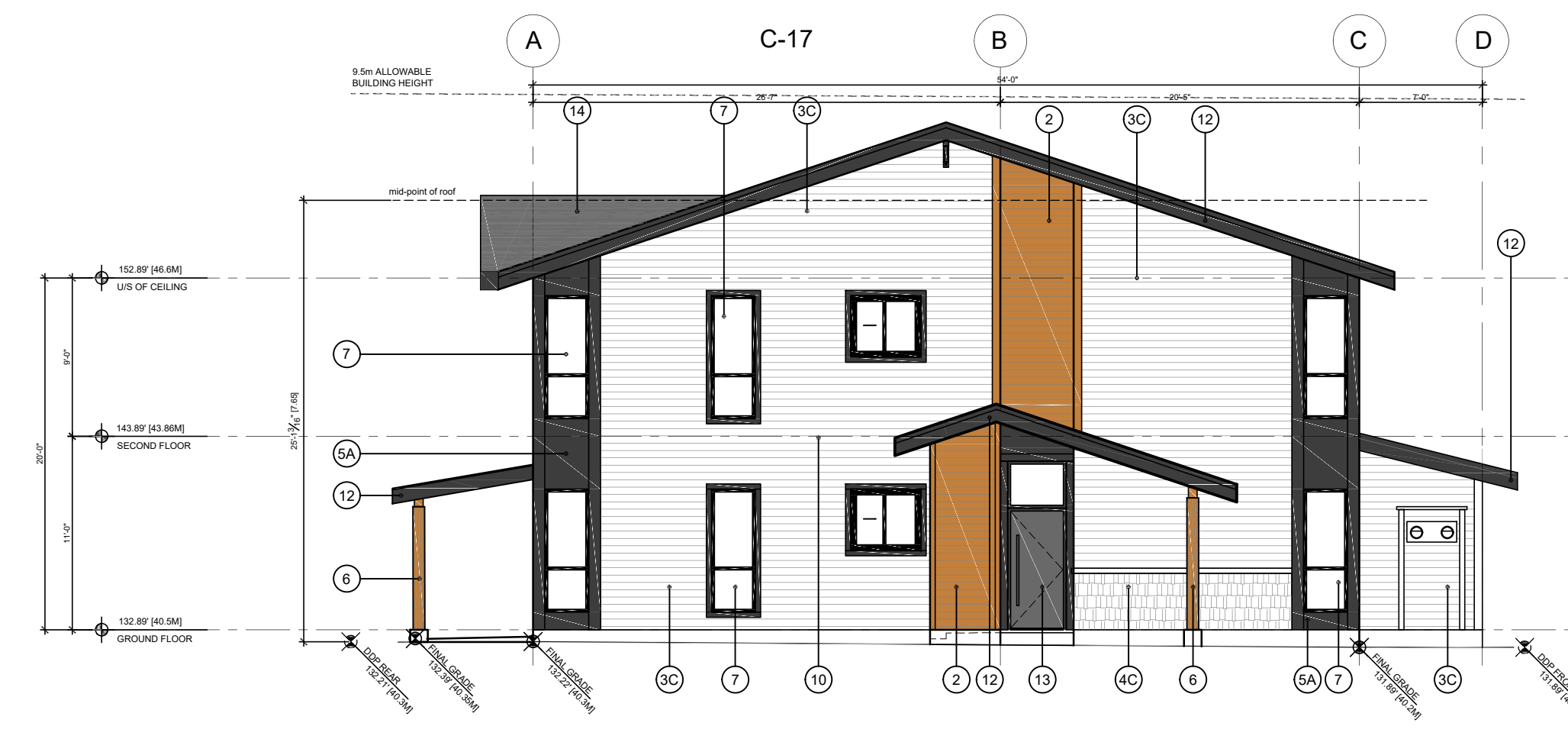
**1** BLOCK 6 - FRONT ELEVATION  
DP3.5 1:100



**2** BLOCK 6 - SIDE ELEVATION  
DP3.5 1:100



**3** BLOCK 6 - REAR ELEVATION  
DP3.5 1:100



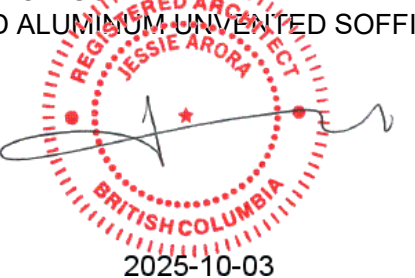
**4** BLOCK 6 - SIDE ELEVATION  
DP3.5 1:100

**MATERIAL FINISHES LEGEND**

1A	THIN STONE SIDING - ALPINE LEDGESTONE - WINTERHAVEN
1B	THIN STONE SIDING - ALPINE LEDGESTONE - DARKRIDGE
2	WOODTONED FIBER CEMENT SIDING - SUMMER WHEAT
3A	FIBER CEMENT SIDING - NIGHT GREY (DARK GREY)
3B	FIBER CEMENT SIDING - GREY SLATE (LIGHT GREY)
3C	FIBER CEMENT SIDING - ARCTIC WHITE (WHITE)
4A	FIBER CEMENT SHAKES - NIGHT GREY (DARK GREY)
4B	FIBER CEMENT SHAKES - COBBLE STONE (BEIGE)
4C	FIBER CEMENT SHAKES - ARCTIC WHITE (WHITE)
5A	FIBER CEMENT PANEL (SMOOTH) - NIGHT GREY (DARK GREY)
5B	FIBER CEMENT PANEL (SMOOTH) - GREY SLATE (LIGHT GREY)
5C	FIBER CEMENT PANEL (SMOOTH) - COBBLE STONE (BEIGE)
6	STAINED HEAVY TIMBER POST
7	VINYL WINDOW & DOOR - BLACK WITH DOUBLE LAYERED GLAZING
8	ALUMINUM RAILING WITH GLASS - BLACK
9	ALUMINUM RAILING - BLACK
10	THROUGH WALL FLASHING TO MATCH ADJACENT CLADDING COLOUR
11	WAINSCOT CAP - STONE GREY
12	FIBER CEMENT FASCIA AND TRIMS - PAINTED (DARK GREY)
13	FIBERGLASS ENTRY & GARAGE DOOR
14	GREY ASPHALT SHINGLES
15	ELECTRICAL METERS PAINTED TO COLOUR MATCH ADJACENT FINISH
16	CONCRETE WALL WITH ELASTOMERIC PAINT (COLOUR TO MATCH ADJACENT FINISH)

**NOTE:**

- AS PER WILD FIRE REPORT, ALL UNITS TO HAVE:
  - ALUMINUM PERFORATED SOFFITS
  - SCREENED GUTTERS
  - ALL OPERABLE OPENINGS TO HAVE FIBERGLASS SCREEN
  - HARDIBOARD EAVES
  - HEAVY TIMBER POST & BEAM OR WITH FIRE TREATED CLADDING
- AT BLOCKS 3 AND 4, EXTERIOR WALL PROJECTIONS LESS THAN 2.4M OF ADJACENT BUILDING TO HAVE NON-COMBUSTIBLE FINISHES: CLADDING, ROOF EAVES, AND FASCIA, AND ALUMINUM UNVENTED SOFFITS.



**Proposed Residential Development**

23689 23717 FERN CRESCENT, MAPLE RIDGE, B.C.

WOOD LOCK DEVELOPMENTS  
ATELIER PACIFIC ARCHITECTURE INC.

MAY 13, 2021  
REVISED: OCTOBER 6, 2025

**DP 3.5**

ELEVATIONS -  
BLOCK 6

