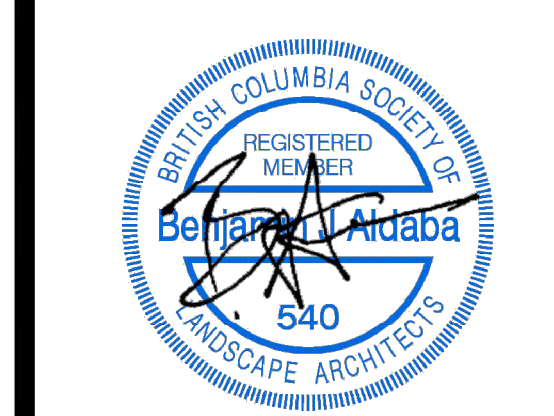


SEAL:



NO.	DATE	REVISION DESCRIPTION	DR.
17	25.SEP.25	REV. PER CITY COMMENTS	BA
16	25.SEP.09	PER CITY COMMENTS	AR
15	25.AUG.07	FENCE UPDATES PER ARCH	AR
14	25.JUL.30	NEW SITE PLAN, CITY COMMENTS	AR
13	25.JUN.23	NEW SITE PLAN	MM
12	25.APR.03	ADDRESS UPDATE	MM
11	25.MAR.20	NEW SITE PLAN, CITY COMMENTS	MM
10	25.FEB.06	NEW SITE PLAN	MM
9	25.JAN.09	NEW SITE PLAN/COORDINATION	MM
8	24.DEC.23	UPDATED CIVIL INFO ADDED	MM
7	24.NOV.6	NEW SITE PLAN - CITY COMMENTS	MM
6	23.DEC.18	ARCH & CIVIL COORDINATION	BJ
5	23.NOV.14	RZ RESUBMISSION	BJ
4	23.SEP.19	RZ RESUBMISSION	BJ
3	23.AUG.02	RZ COORDINATION	BJ
2	23.AUG.02	RZ SUBMISSION	BJ
1	23.JUL.08	ARCH SITE PLAN COORDINATION	BJ

CLIENT:

PROJECT:

PROPOSED SIX STOREY APARTMENT

22551 BROWN AVE.
MAPLE RIDGE, BC

LANDSCAPE PLAN

DATE: 23.03.17

SCALE: 1:100

DRAWN: BJ

DESIGN: BJ

CHK'D: BA

DRAWING NUMBER:

1:100

BJ

BJ

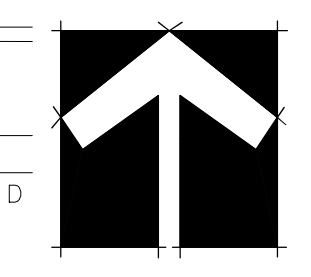
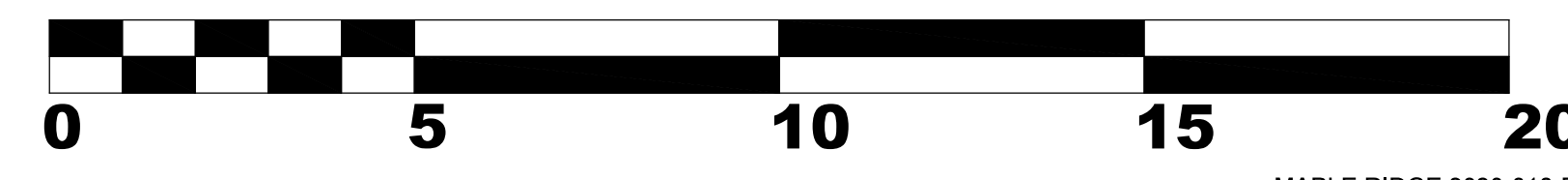
BA

PMG PROJECT NUMBER: 23-051

MAPLE RIDGE 2023-018-RZ
23051-17.ZIP

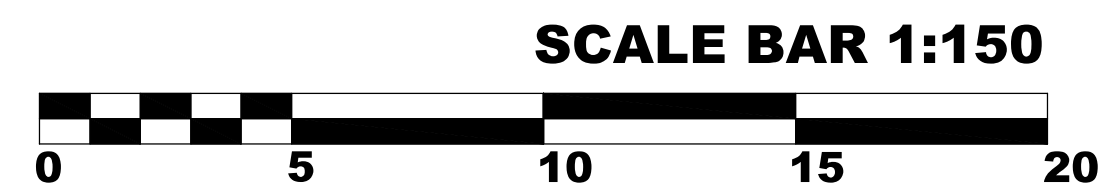
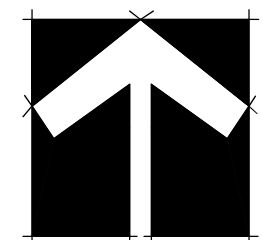
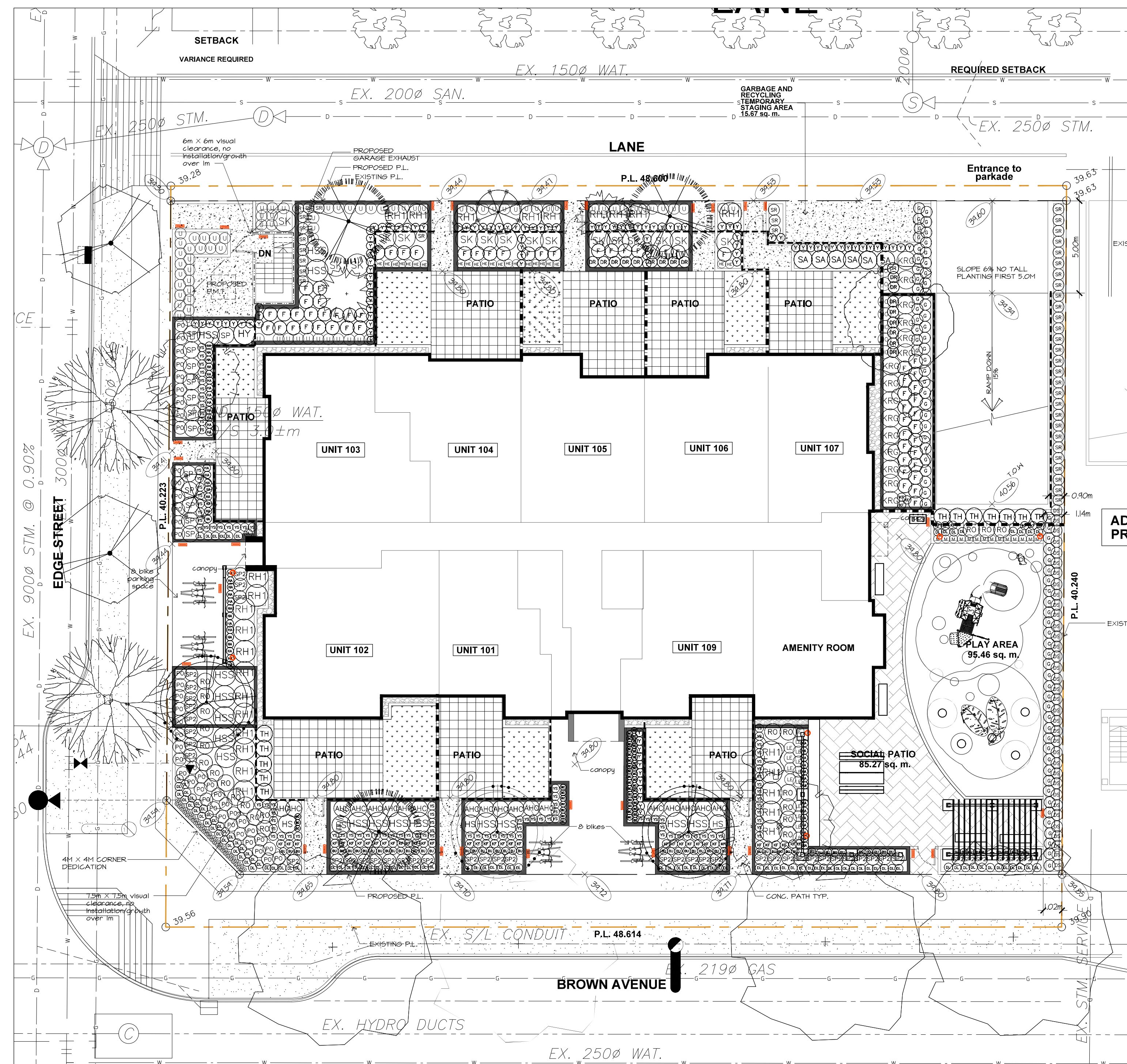


SCALE BAR 1:100



L1

OF 5



PLANT SCHEDULE

KEY	QTY	BOTANICAL NAME	COMMON NAME	PLANTED SIZE / REMARKS
TREE				
2	ACER GRISEUM	PAPERBARK MAPLE	6CM CAL; 1.8M STD; B&B	
3	ACER PALMATUM	JAPANESE MAPLE	2.4M HT, MULTISTEM, B&B	
3	ACER PALMATUM 'AKANE'	AKANE JAPANESE MAPLE	#10 POT, TREE FORM	
1	ACER PALMATUM 'OSHIO BEN'	OSHIO BEN JAPANESE MAPLE	3.0M HT, B&B	
2	CARPINUS BETULUS 'FRANS FONTAINE'	FRANS FONTAINE EUROPEAN HORNBEAM	6CM CAL; 1.8M STD, B&B	
2	CHAMAECYPARIS NOOT. 'GREEN ARROW'	GREEN ARROW NOOTKA CYPRESS	1.5M HT, B&B	
4	GLEDITSIA T. INERMIS 'SUNBURST'	SUNBURST HONEY LOCUST	6CM CAL; 1.8M STD; B&B	
2	PICEA ABIES 'CUPRESSINA'	COLUMNAR NORWAY SPRUCE	3.0M HT, B&B	
3	PINUS FLEXILIS 'VANDERWOLF'S PYRAMID'	VANDERWOLF'S PYRAMID PINE	2.0M HT, B&B	
2	SORBUS AUC. 'CARDINAL ROYAL'	CARDINAL ROYAL MT. ASH	5CM CAL, 1.8M STD, B&B	

NOTES: * PLANT SIZES IN THIS LIST ARE SPECIFIED ACCORDING TO THE BC LANDSCAPE STANDARD AND CANADIAN LANDSCAPE STANDARD, LATEST EDITION. CONTAINER SIZES SPECIFIED AS PER CNLA STANDARD. BOTH PLANT SIZE AND CONTAINER SIZE ARE THE MINIMUM ACCEPTABLE SIZES. * REFER TO SPECIFICATIONS FOR DEFINED CONTAINER MEASUREMENTS AND OTHER PLANT MATERIAL REQUIREMENTS. * SEARCH AND REVIEW: MAKE PLANT MATERIAL AVAILABLE FOR OPTIONAL REVIEW BY LANDSCAPE ARCHITECT AT SOURCE OF SUPPLY. AREA OF SEARCH TO INCLUDE LOWER MAINLAND AND FRASER VALLEY. * SUBSTITUTIONS: OBTAIN WRITTEN APPROVAL FROM THE LANDSCAPE ARCHITECT PRIOR TO MAKING ANY SUBSTITUTIONS. SUBSTITUTIONS ARE SUBJECT TO BC LANDSCAPE STANDARD AND CANADIAN LANDSCAPE STANDARD - DEFINITION OF CONDITIONS OF AVAILABILITY. * ALL LANDSCAPE MATERIAL AND WORKMANSHIP MUST MEET OR EXCEED BC LANDSCAPE STANDARD AND CANADIAN LANDSCAPE STANDARD LATEST EDITION. * ALL PLANT MATERIAL MUST BE PROVIDED FROM CERTIFIED DISEASE FREE NURSERY. * BIO-SOLIDS NOT PERMITTED IN GROWING MEDIUM UNLESS AUTHORIZED BY LANDSCAPE ARCHITECT.

PROPOSED TREES



PLANT SCHEDULE

KEY	QTY	BOTANICAL NAME	COMMON NAME	PLANTED SIZE / REMARKS
SHRUB				
19	AZALEA JAPONICA 'HINO CRIMSON'	AZALEA; SINGLE DEEP CRIMSON	#3 POT; 40CM	
60	BUXUS GREEN VELVET	GREEN VELVET BOXWOOD	#5 POT	
1	HYDRANGEA MACROPHYLLA 'HORABSTRA'	ABRACADABRA ORB HYDRANGEA	#3 POT	
4	HYDRANGEA MACROPHYLLA 'HORTHAT'	SEASIDE SERENADE CAPE HATTERAS HYDRANGEA	#3 POT; 80CM	
16	HYDRANGEA PANICULATA 'RENSUN'	STRAWBERRY SUNDAY HYDRANGEA	#3 POT	
15	KALMIA LATIFOLIA 'RASPBERRY GLOW'	RASPBERRY GLOW KALMIA	#3 POT	
26	RHODODENDRON 'SNEEZY'	SNEEZY RHODODENDRON; PINK	#3 POT; 50CM	
22	ROSA 'MINI CHERRY'	FLOWER CARPET MINI CHERRY ROSE	#2 POT; 30CM	
6	SARCOCOCCA HOOKERIANA 'RUSCIFOLIA'	FRAGRANT SARCOCOCCA	#3 POT; 40CM	
16	SKIMMIA JAPONICA (10% MALE)	JAPANESE SKIMMIA	#3 POT; 50CM	
42	SKIMMIA REEVESIANA	DWARF REEVE'S SKIMMIA	#2 POT	
13	SPIRAEA X BUMALDA 'GOLDFLAME'	GOLDFLAME SPIREA	#3 POT; 60CM	
47	SPIRAEA X JAPONICA 'YAN'	DOUBLE PLAY SPIREA	#2 POT	
99	TAXUS X MEDIA 'HICKSII' (S)	HICKS YEW (S)	#5 POT	
103	TAXUS X MEDIA 'HICKSII' (L)	HICKS YEW (L)	1.2M HT, B&B	
35	THUJA OCC. 'DEGROOT'S SPIRE'	DEGROOT'S SPIRE CEDAR	#5 POT	
12	THUJA OCCIDENTALIS 'SMARAGD'	EMERALD GREEN CEDAR	1.75M HT; B&B	
GRASS				
46	CALAMAGROSTIS A. 'KARL FOERSTER'	KARL FOERSTER FEATHERREED GRASS	#2 POT, FULL	
49	HAKONECHLOA MACRA 'AUREA'	GOLDEN HAKONE GRASS	#2 POT	
45	PENNISETUM ORIENTALE 'KARLEY ROSE'	KARLEY ROSE FOUNTAIN GRASS	#2 POT, FULL	
14	STIPA TENUISSIMA	MEXICAN FEATHER GRASS	#1 POT	
PERENNIAL				
112	HEMEROCALLIS 'ROSY RETURNS'	ROSY RETURNS DAYLILY	#2 POT; 2-3 FAN	
43	HEUCHERA 'CHERRY COLA'	CHERRY COLA CORAL BELLS	#1 POT	
22	HEUCHERA SPP.	CORAL BELLS; PINK OR WHITE	15CM POT	
7	HOSTA 'FRANCES WILLIAMS'	HOSTA; LARGE; BLUE-GREEN AND YELLOW VAR	#1 POT; 1 EYE	
14	LAVENDULA ANGUSTIFOLIA	ENGLISH LAVENDER	#1 POT	
51	SEDUM REFLEXUM 'ANGELINA'	STONECROP	9CM POT	
GC				
77	ARCTOSTAPHYLOS UVA-URSI 'VANCOUVER JADE'	KINNICKINICK	#1 POT; 20CM	
18	DRYOPTERIS FILIX-MAS 'ROBUSTA'	ROBUST MALE FERN	#2 POT; 45CM	
77	GAULTHERIA SHALLON	SALAL	#2 POT	
61	POLYSTICHUM MUNITUM	WESTERN SWORD FERN	#2 POT	

NOTES: * PLANT SIZES IN THIS LIST ARE SPECIFIED ACCORDING TO THE BC LANDSCAPE STANDARD AND CANADIAN LANDSCAPE STANDARD, LATEST EDITION. CONTAINER SIZES SPECIFIED AS PER CNLA STANDARD. BOTH PLANT SIZE AND CONTAINER SIZE ARE THE MINIMUM ACCEPTABLE SIZES. * REFER TO SPECIFICATIONS FOR DEFINED CONTAINER MEASUREMENTS AND OTHER PLANT MATERIAL REQUIREMENTS. * SEARCH AND REVIEW: MAKE PLANT MATERIAL AVAILABLE FOR OPTIONAL REVIEW BY LANDSCAPE ARCHITECT AT SOURCE OF SUPPLY. AREA OF SEARCH TO INCLUDE LOWER MAINLAND AND FRASER VALLEY. * SUBSTITUTIONS: OBTAIN WRITTEN APPROVAL FROM THE LANDSCAPE ARCHITECT PRIOR TO MAKING ANY SUBSTITUTIONS. SUBSTITUTIONS ARE SUBJECT TO BC LANDSCAPE STANDARD AND CANADIAN LANDSCAPE STANDARD - DEFINITION OF CONDITIONS OF AVAILABILITY. * ALL LANDSCAPE MATERIAL AND WORKMANSHIP MUST MEET OR EXCEED BC LANDSCAPE STANDARD AND CANADIAN LANDSCAPE STANDARD LATEST EDITION. * ALL PLANT MATERIAL MUST BE PROVIDED FROM CERTIFIED DISEASE FREE NURSERY. * BIO-SOLIDS NOT PERMITTED IN GROWING MEDIUM UNLESS AUTHORIZED BY LANDSCAPE ARCHITECT.

© Copyright reserved. This drawing and design is the property of PMG Landscape Architects and may not be reproduced or used for other projects without their permission.



Suite C100 - 4185 Still Creek Drive
Burnaby, British Columbia, V5C 6G9
p: 604 294-0011 ; f: 604 294-0022

SEAL:



NO.	DATE	REVISION DESCRIPTION	DR.
17	25.SEP.25	REV. PER CITY COMMENTS	BA
16	25.SEP.09	PER CITY COMMENTS	AR
15	25.AUG.07	FENCE UPDATES PER ARCH	AR
14	25.JUL.30	NEW SITE PLAN, CITY COMMENTS	AR
13	25.JUN.23	NEW SITE PLAN	MM
12	25.APR.03	ADDRESS UPDATE	MM
11	25.MAR.20	NEW SITE PLAN, CITY COMMENTS	MM
10	25.FEB.06	NEW SITE PLAN	MM
9	25.JAN.09	NEW SITE PLAN/COORDINATION	MM
8	24.DEC.23	UPDATED CIVIL INFO ADDED	MM
7	24.NOV.6	NEW SITE PLAN - CITY COMMENTS	MM
6	23.DEC.18	ARCH & CIVIL COORDINATION	BJ
5	23.NOV.14	RZ RESUBMISSION	BJ
4	23.SEP.19	RZ RESUBMISSION	BJ
3	23.SEP.11	RZ COORDINATION	BJ
2	23.AUG.02	RZ SUBMISSION	BJ
1	23.JUL.08	ARCH SITE PLAN COORDINATION	BJ

NO. DATE REVISION DESCRIPTION DR.

CLIENT:

PROJECT:

PROPOSED SIX STOREY APARTMENT

22551 BROWN AVE.
MAPLE RIDGE, BC

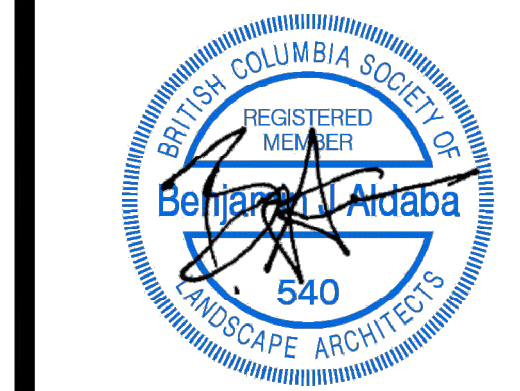
DRAWING TITLE:

SHRUB PLAN

DATE: 23.03.17 DRAWING NUMBER:
SCALE: 1:150
DRAWN: BJ
DESIGN:
CHK'D: BA OF 5

L2

SEAL:



NO.	DATE	REVISION DESCRIPTION	DR.
17	25.SEP.25	REV. PER CITY COMMENTS	BA
16	25.SEP.09	PER CITY COMMENTS	AR
15	25.AUG.07	FENCE UPDATES PER ARCH	AR
14	25.JUL.30	NEW SITE PLAN, CITY COMMENTS	AR
13	25.JUN.23	NEW SITE PLAN	MM
12	25.APR.03	ADDRESS UPDATE	MM
11	25.MAR.20	NEW SITE PLAN, CITY COMMENTS	MM
10	25.FEB.06	NEW SITE PLAN	MM
9	25.JAN.09	NEW SITE PLAN/COORDINATION	MM
8	24.DEC.23	UPDATED CIVIL INFO ADDED	MM
7	24.NOV.6	NEW SITE PLAN - CITY COMMENTS	MM
6	23.DEC.18	ARCH & CIVIL COORDINATION	BJ
5	23.NOV.14	RZ RESUBMISSION	BJ
4	23.SEP.19	RZ RESUBMISSION	BJ
3	23.SEP.11	RZ COORDINATION	BJ
2	23.AUG.02	RZ SUBMISSION	BJ
1	23.JUL.08	ARCH SITE PLAN COORDINATION	BJ

CLIENT:

PROJECT:

PROPOSED SIX STOREY APARTMENT

22551 BROWN AVE.
MAPLE RIDGE, BC

DRAWING TITLE:

SOIL VOLUMES & GRADING PLAN

DATE: 23.03.17 DRAWING NUMBER:

SCALE: 1:100

DRAWN: BJ

DESIGN: BJ

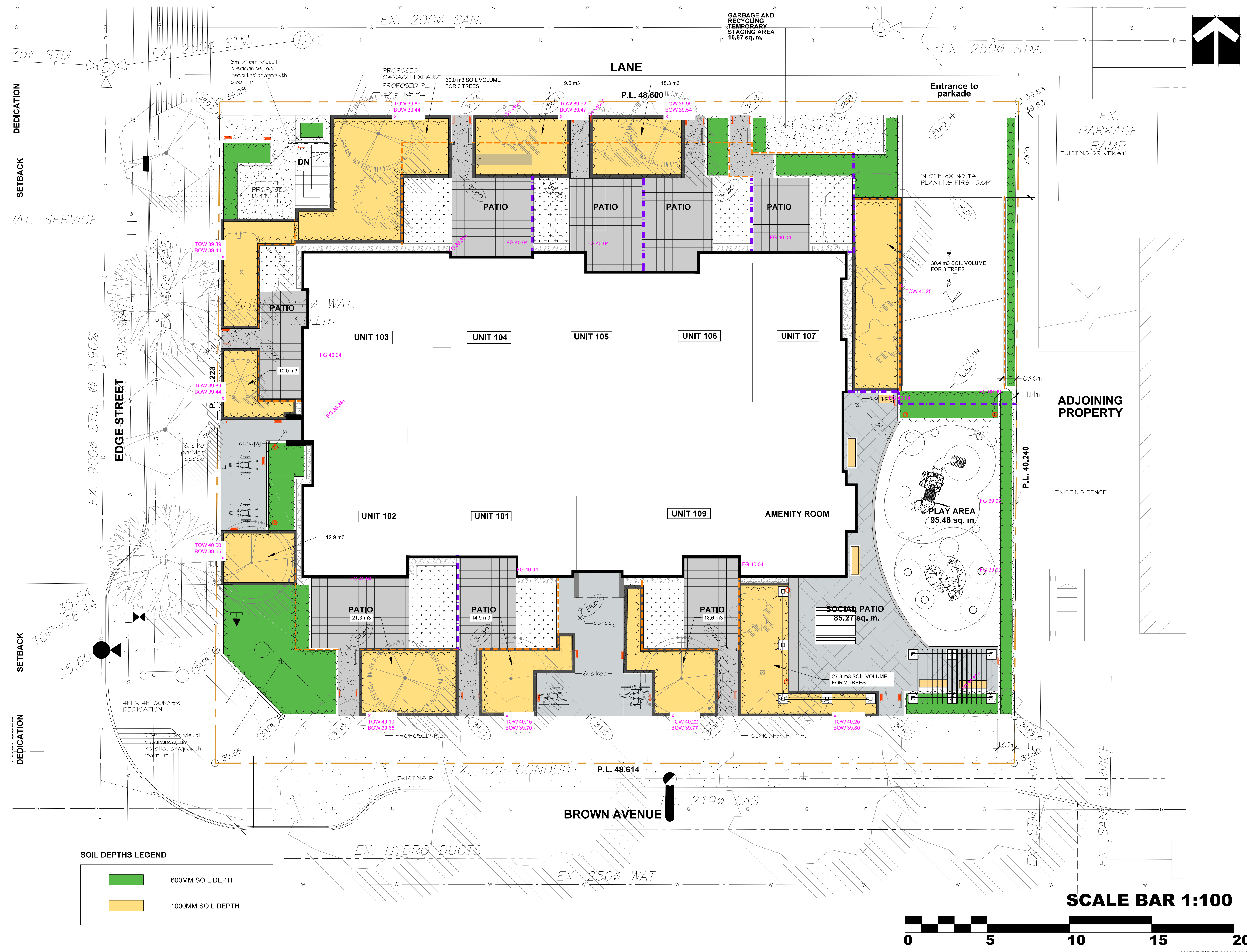
CHK'D: BA

PMG PROJECT NUMBER:

L3

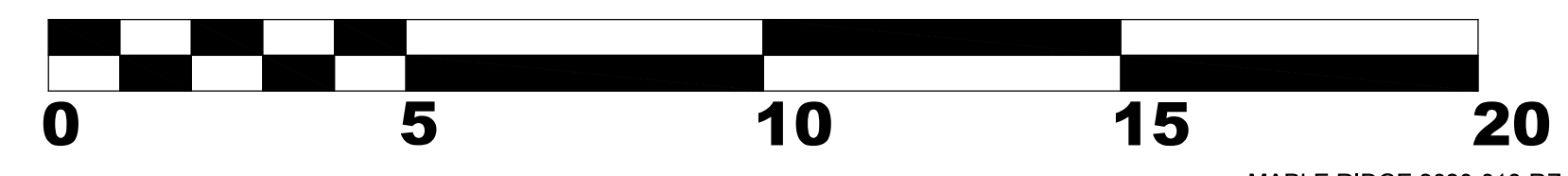
OF 5

23-051



SOIL DEPTHS LEGEND

	600MM SOIL DEPTH
	1000MM SOIL DEPTH



MAPLE RIDGE 2023-018-RZ
23051-17.ZIP

MATERIALS LEGEND: PAVING

PATTERN	ITEM	DESCRIPTION
	B.F. SAWCUT CONCRETE	WALKWAYS, SEATING LEDGES COLOURS - NATURAL; SAW CUT SCORE PATTERN STACKED BOND 2:1 MAX 1200mm APART
	PORCELAIN UNIT SLABS	AMENITY SPACE AND ENTRY PAVING PLAZAS: PORCELAIN SLAB 24X36 , HERRINGBONE PATTERN COLOUR - TBD
	PORCELAIN UNIT SLABS	UNIT PATIOS AND WALKWAYS: 24X24 PORCELAIN SLAB, BOND COLOUR - TBD
	DRAIN GRAVEL	DRAIN GRAVEL
	PLAY SURFACING	CIP RUBBER PLAY SURFACE WITH 4'-0" FALL HEIGHT CUSHION COLOUR/PATTERN - CUSTOM
	18" ht. (450mm) PLANTER WALLS	

MATERIALS LEGEND: FENCING

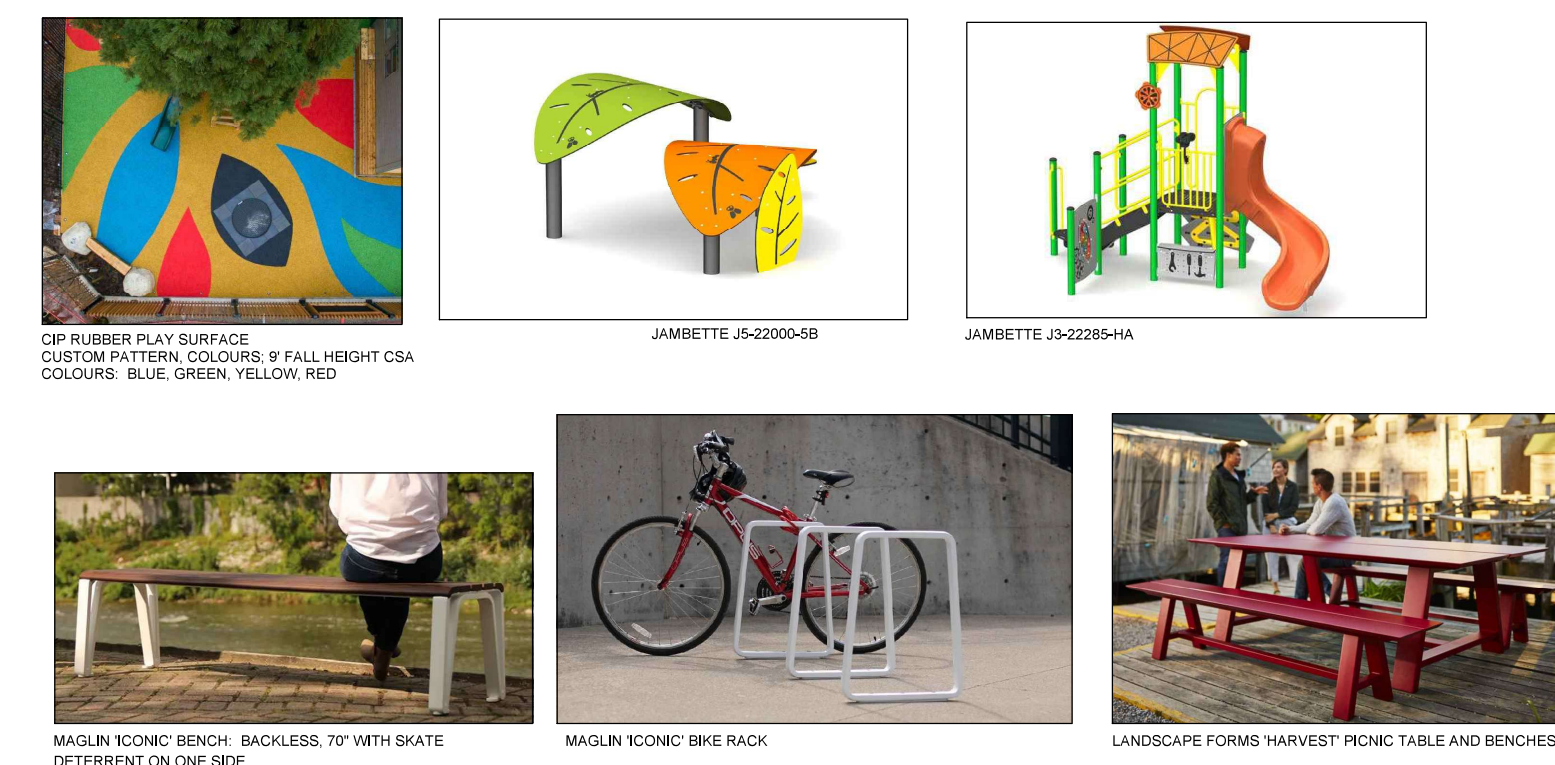
SYMBOL	ITEM	DESCRIPTION
	1200mm-ht. ALUMINUM FENCE & GATE	DETAIL
	1800mm-ht. METAL FENCE WITH TRANSLUCENT GLASS	DETAIL

NOTE:
1. FENCE HEIGHT TO BE ADJUSTED WHERE INSTALLED ABOVE PLANTER WALLS TO MAINTAIN A CONSISTENT OVERALL HEIGHT (FENCE + WALL).

MATERIALS LEGEND: LANDSCAPE LIGHTING

SYMBOL	ITEM	DESCRIPTION
	WALL LIGHT	DALS STEP LIGHT BLACK POWDERCOAT
	PATH BOLLARD LIGHT	LIGMAN PRAGUE BLACK POWDERCOAT
	CATENARY LIGHTS	BEGA BLACK POWDERCOAT

PROPOSED SITE ELEMENTS



PROPOSED LANDSCAPE LIGHTING

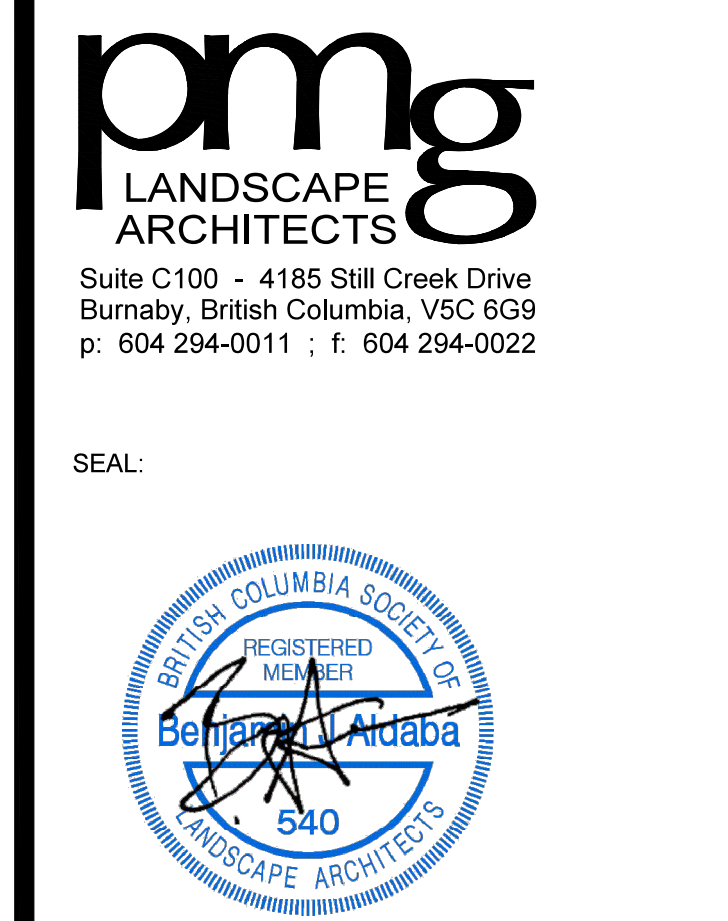


MATERIALS LEGEND: SITE FURNISHINGS AND PLAY EQUIPMENT

QTY	SYMBOL	ITEM	DESCRIPTION
1		BENCH	MAGLIN 'ICONIC' BACKLESS 70" BENCH, RED POWDERCOAT MBE-2300-00044
8		BIKE RACK	MAGLIN 'ICONIC' BIKE RACK, RED POWDERCOAT MBE-2300-00001
1		PICNIC TABLE AND BENCHES	LANDSCAPE FORMS 'HARVEST' PICNIC TABLE AND BENCHES, RED COLOUR
1		PLAY STRUCTURE	JAMBETTE J3-22285-HA
1		PLAY STRUCTURE	JAMBETTE J5-22000-5B
1		WASTE RECEPTACLE	MAGLIN 'LEXICON' DOUBLE RECYCLING UNIT - PC BLACK
6		RUBBER HALF MOUND	MARATHON SURFACES RUBBER SPHERE - ORANGE
5		MODULAR BENCHES	LANDSCAPE FORMS 'PARALLEL 45' MODULAR BENCH SYSTEM; DSTMA WOOD WEDGE - STRAIGHT WITH RIGHT - STRAIGHT SEGMENTS; PC COLOURS TBD
1		WATER HOSE BIB	PROVIDE WATER HOOKUP

NOTE:
1. ALL FURNITURE ON SLAB TO BE SURFACE MOUNTED TO HOUSEKEEPING SLAB PER MANUFACTURERS' SIZING AND SPECIFICATIONS.
2. SITE ELEMENTS (FURNISHINGS, PLAY EQUIPMENT, FENCING, PAVING TO BE INSTALLED PER MANUFACTURERS' SPECIFICATIONS.
3. ALL PLAY EQUIPMENT TO PROVIDED WITH SAFETY SURFACING OF A DEPTH AND AREA TO MEET OR EXCEED CSA SAFETY STANDARDS.
4. ALL FURNISHINGS AND PLAY EQUIPMENT TO BE REVIEWED BY STRUCTURAL ENGINEER AND ARCHITECT FOR LOAD REQUIREMENTS.
5. FURNISHINGS MAY BE SUBSTITUTED FOR SIMILAR, BASED ON AVAILABILITY.

© Copyright reserved. This drawing and design is the property of PMG Landscape Architects and may not be reproduced or used for other projects without their permission.



SEAL:



NO.	DATE	REVISION DESCRIPTION	DR.
17	25.SEP.25	REV. PER CITY COMMENTS	BA
16	25.SEP.09	PER CITY COMMENTS	AR
15	25.AUG.07	FENCE UPDATES PER ARCH	AR
14	25.JUL.30	NEW SITE PLAN, CITY COMMENTS	AR
13	25.JUN.23	NEW SITE PLAN	MM
12	25.APR.03	ADDRESS UPDATE	MM
11	25.MAR.20	NEW SITE PLAN, CITY COMMENTS	MM
10	25.FEB.06	NEW SITE PLAN	MM
9	25.JAN.09	NEW SITE PLAN/COORDINATION	MM
8	24.DEC.23	UPDATED CIVIL INFO ADDED	MM
7	24.NOV.6	NEW SITE PLAN - CITY COMMENTS	MM
6	23.DEC.18	ARCH & CIVIL COORDINATION	BJ
5	23.NOV.14	RZ RESUBMISSION	BJ
4	23.SEP.19	RZ RESUBMISSION	BJ
3	23.SEP.11	RZ COORDINATION	BJ
2	23.AUG.02	RZ SUBMISSION	BJ
1	23.JUL.08	ARCH SITE PLAN COORDINATION	BJ

CLIENT:

PROJECT:

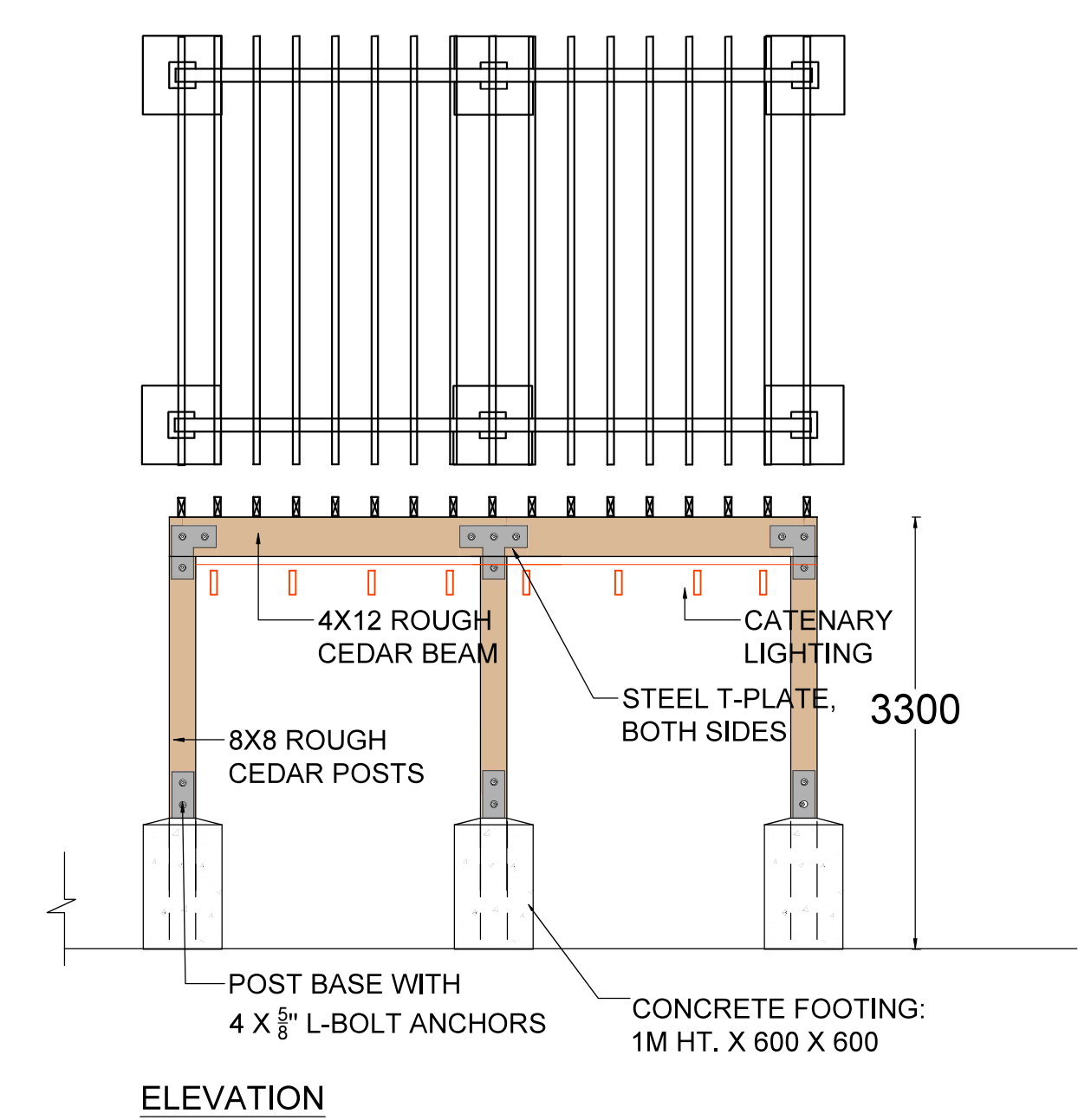
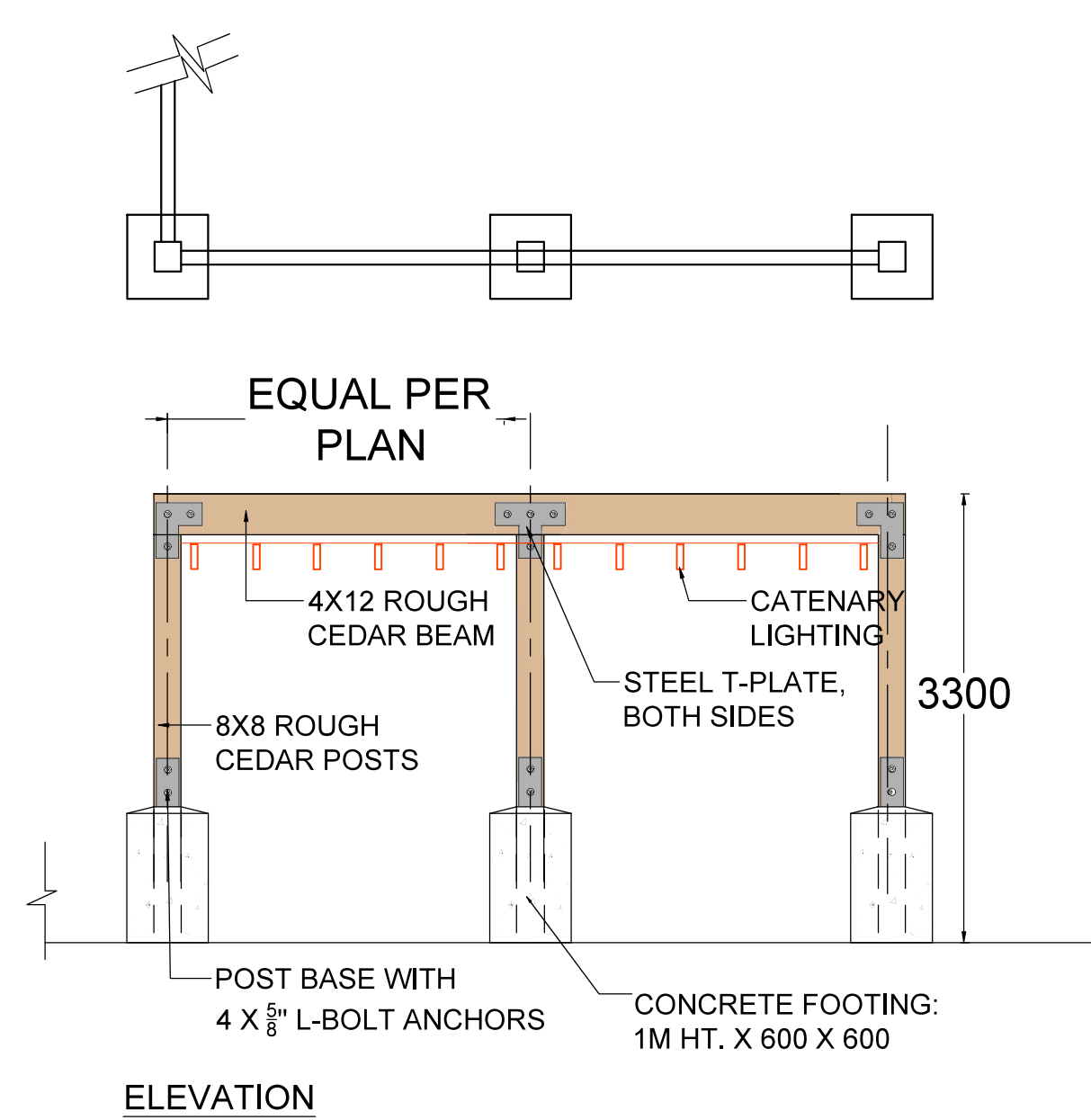
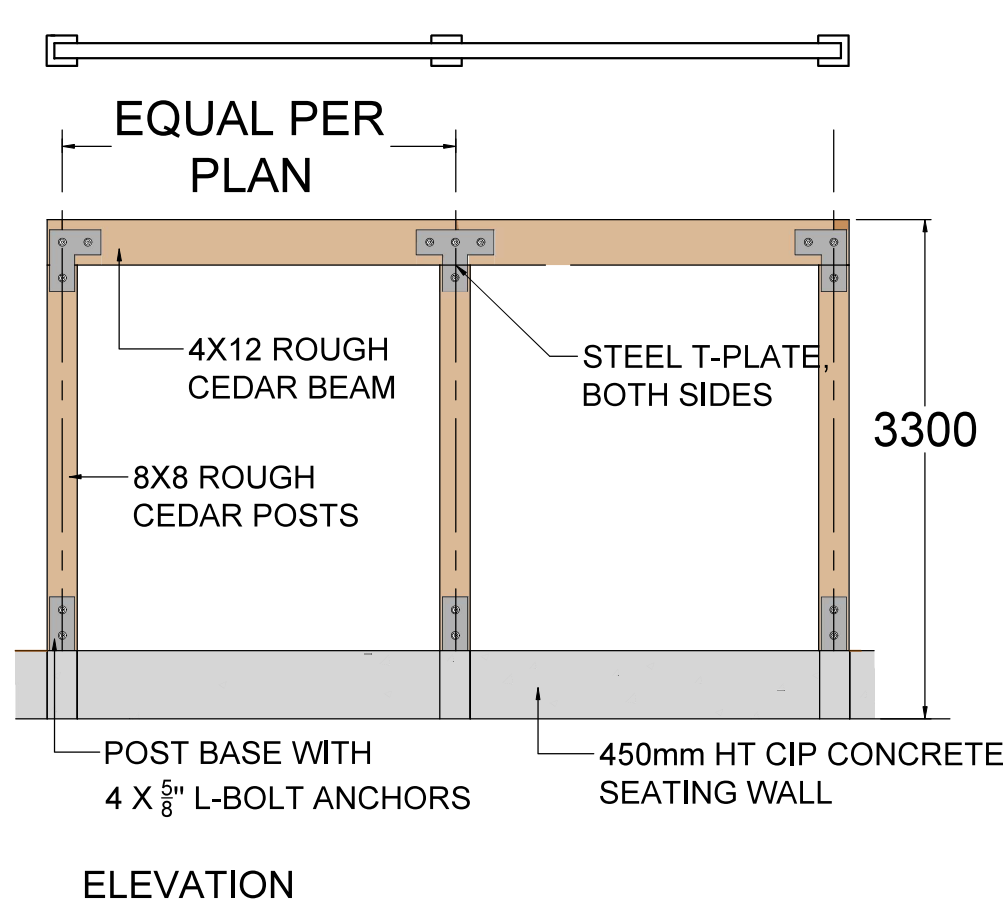
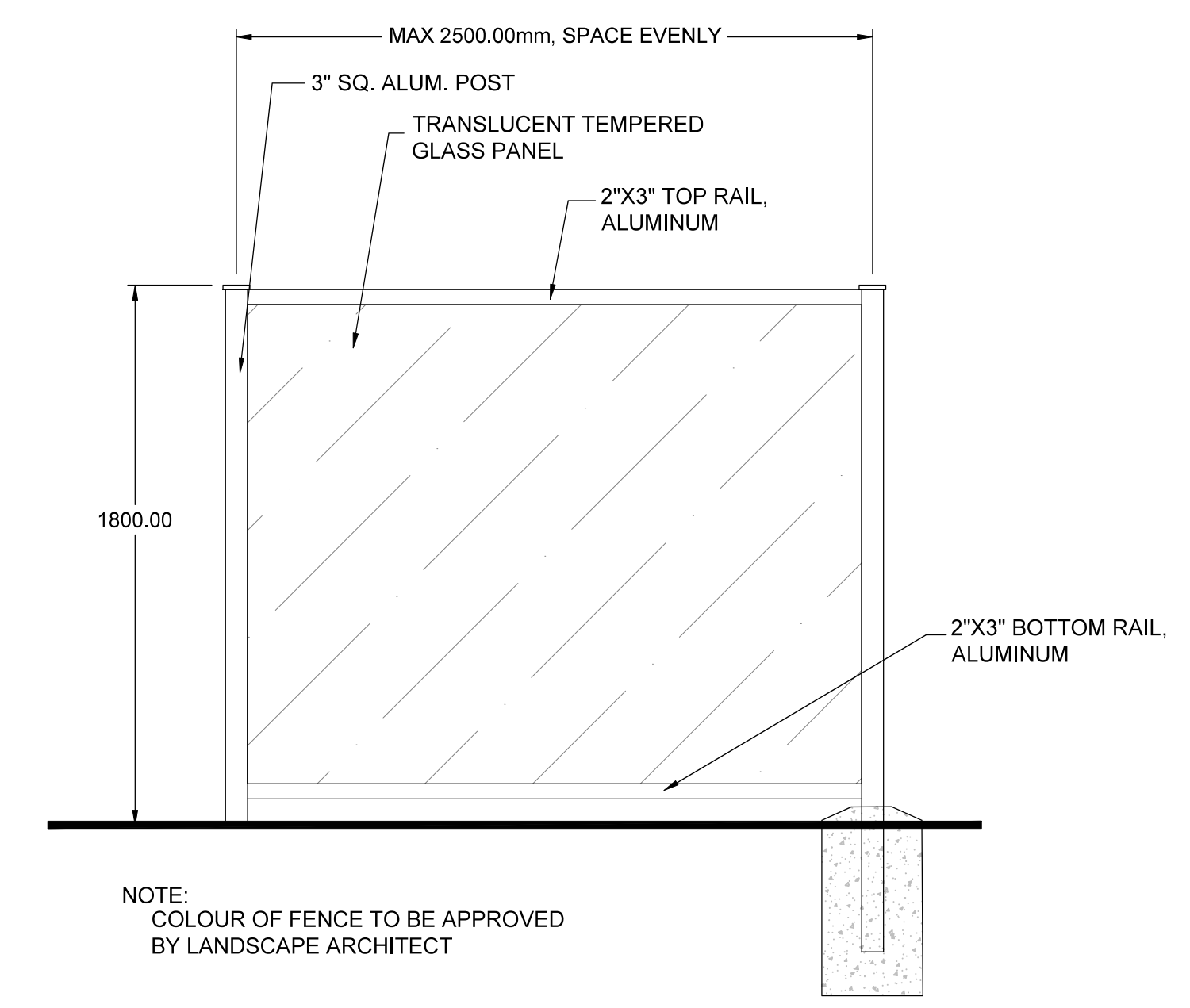
PROPOSED SIX STOREY APARTMENT

22551 BROWN AVE.
MAPLE RIDGE, BC

DESIGN ELEMENTS

DATE:	23.03.17	DRAWING NUMBER:	
SCALE:	VARIES		
DRAWN:	BJ		
DESIGN:			
CHK'D:	BA		

L4
OF 5



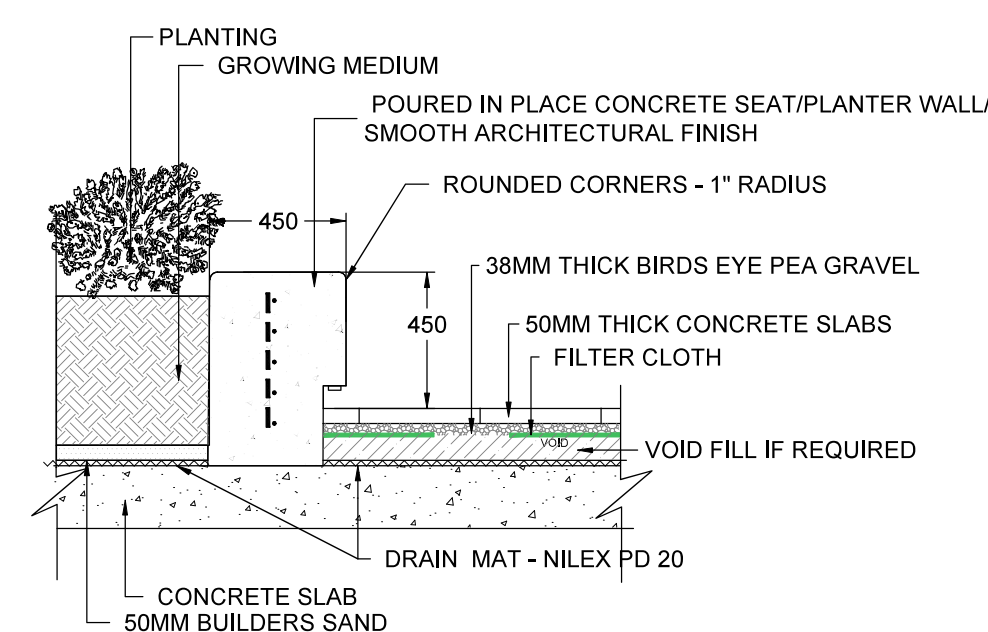
1 1800mm. HT. METAL & GLASS PRIVACY FENCE
1:20

2 WOOD FRAME CONCEPT
1:50 WEST ENTRANCE

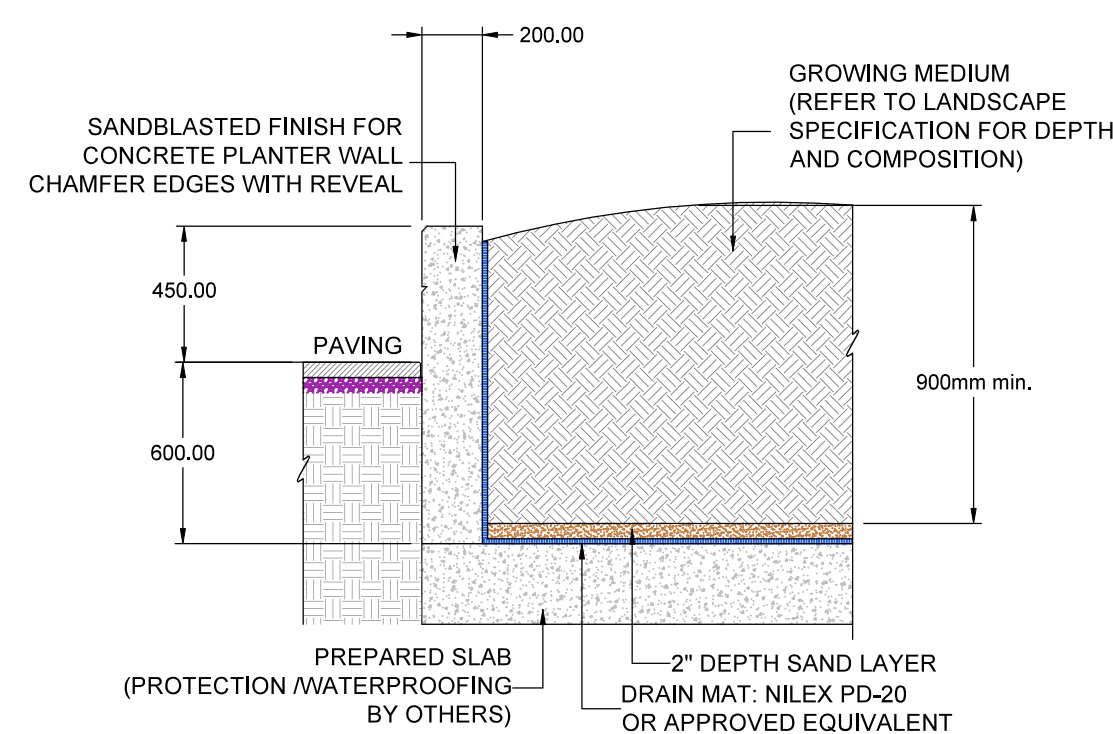
3 WOOD FRAME TRELLIS CONCEPT
1:50 AMENITY AREA ENTRANCE

4 WOOD FRAME PERGOLA CONCEPT
1:50 AMENITY AREA ENTRANCE

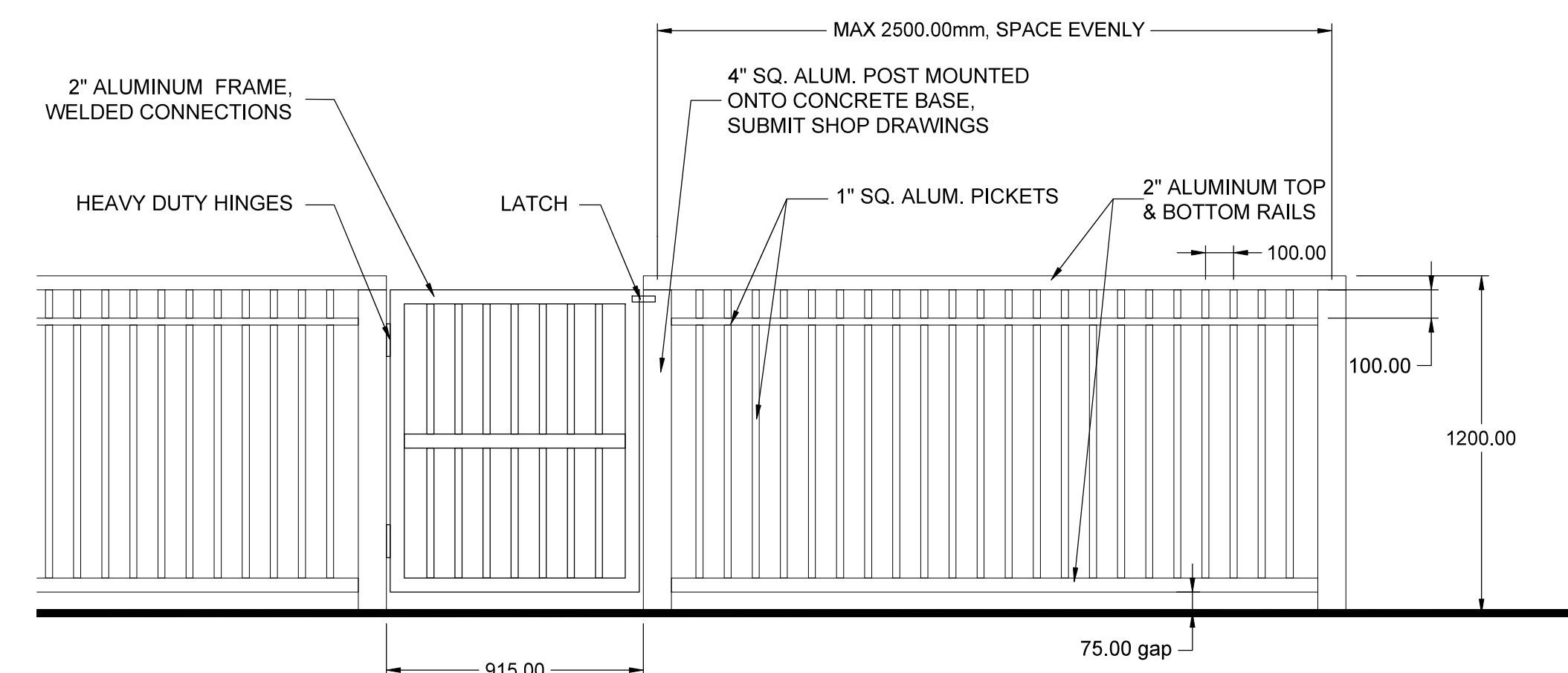
SEAL:



5 CONCRETE SEAT WALL
L5 1:25 AMENITY AREA



6 450 mm. HT. CONCRETE PLANTER WALL
L5 1:25



NOTE:
FENCE AND GATE TO HAVE 2 COATS OF POWDER COAT IN GLOSSY BLACK.

7 1200mm. HT. ALUMINUM FENCE & GATE
L5 1:20

NO.	DATE	REVISION DESCRIPTION	DR.
17	25.SEP.25	REV. PER CITY COMMENTS	BA
16	25.SEP.09	PER CITY COMMENTS	AR
15	25.AUG.07	FENCE UPDATES PER ARCH	AR
14	25.JUL.30	NEW SITE PLAN, CITY COMMENTS	AR
13	25.JUN.23	NEW SITE PLAN	MM
12	25.APR.03	ADDRESS UPDATE	MM
11	25.MAR.20	NEW SITE PLAN, CITY COMMENTS	MM
10	25.FEB.06	NEW SITE PLAN	MM
9	25.JAN.09	NEW SITE PLAN/COORDINATION	MM
8	24.DEC.23	UPDATED CIVIL INFO ADDED	MM
7	24.NOV.6	NEW SITE PLAN - CITY COMMENTS	MM
6	23.DEC.18	ARCH & CIVIL COORDINATION	BJ
5	23.NOV.14	RZ RESUBMISSION	BJ
4	23.SEP.19	RZ RESUBMISSION	BJ
3	23.SEP.11	RZ COORDINATION	BJ
2	23.AUG.02	RZ SUBMISSION	BJ
1	23.JUL.08	ARCH SITE PLAN COORDINATION	BJ

CLIENT:

PROJECT:

**PROPOSED
SIX STOREY APARTMENT**

**22551 BROWN AVE.
MAPLE RIDGE, BC**

DRAWING TITLE:

DETAILS

DATE: 23.03.17 DRAWING NUMBER:
SCALE: VARIES
DRAWN: BJ
DESIGN: BJ
CHK'D: BA

L5

OF 5